



You can view the agenda on the [website](#)
or use a smart phone camera and scan the code

To: The Chair and Members
of the Cabinet

County Hall
Topsham Road
Exeter
Devon
EX2 4QD

Date: 3 February 2022

Contact: Karen Strahan, 01392 382264

Email: karen.strahan@devon.gov.uk

CABINET

Friday, 11th February, 2022

A meeting of the Cabinet is to be held on the above date at 10.30 am in the Council Chamber - County Hall to consider the following matters.

Phil Norrey
Chief Executive

A G E N D A

PART I - OPEN COMMITTEE

1 Apologies for Absence

2 Minutes

Minutes of the meeting held on 12 January 2022 (previously circulated).

3 Items Requiring Urgent Attention

Items which in the opinion of the Chair should be considered at the meeting as matters of urgency.

4 Announcements

5 Petitions

6 Question(s) from Members of the Council

FRAMEWORK DECISION

7 Revenue Budget and Medium Term Financial Strategy 2022/23 - 2025/26 and Capital Programme 2022/23 - 2026/27

Report of the Director of Finance (DF/22/17) on the Council's Budget and Service Budgets for 2022/2023, will follow, due to all the final figures not having yet been received.

The Cabinet will accordingly also consider:

- Outcomes of the Budget Consultation Meetings with representatives of the Devon Business Community, Older People and the Voluntary Sector and Trade Unions (CSO/22/4), attached;
- Overview and Scrutiny Budget Recommendations (CSO/22/5), attached; and
- Minute 27 of the Devon Education (Schools) Forum, held on 19 January 2022, relating to the budget and the recommendation to Cabinet outlined in those minutes.

Cabinet is also asked to note the role of the Corporate Infrastructure and Regulatory Services Scrutiny Committee on 27 January 2022 (Minute *32) in reviewing and endorsing the Report of the Director of Finance (DF/22/05) on the [Treasury Management and Investment Strategy for 2022/23](#) and commending it to the Cabinet.

- a Budget Consultation Meetings - Devon Business Community, Voluntary Sector and Trade Unions (Pages 1 - 6)
- b Scrutiny Budget Recommendations (Pages 7 - 8)
- c Devon Education Forum - 19th January 2022 (Pages 9 - 16)

Electoral Divisions(s): All Divisions

KEY DECISION

8 Admission & Education Transport Policies for 2023-24 (Pages 17 - 58)

Report of the Head of Education and Learning (CS/22/01) which asks the Cabinet to note that the admission arrangements were proposed and consulted on for the Local Authority and to approve the recommendations outlined in Section 2 of the Report, attached.

The proposed amendments to each policy are outlined in the Appendices to the Report.

Electoral Divisions(s): All Divisions

MATTERS REFERRED

NIL

STANDING ITEMS

9 Question(s) from Members of the Public

10 Minutes

Minutes of the bodies shown below are circulated herewith for information or endorsement as indicated therein (i.e. any unstarred minutes):

a Farms Estate Committee - 7 February 2022

The minutes will be published shortly – click [link](#) or copy web address below.

<https://democracy.devon.gov.uk/ieListDocuments.aspx?CId=163&MId=4230>

b Devon Education Forum - 19th January 2022 (pages 9-16)

[NB: Minutes of [County Council Committees](#) are published on the Council's Website:

11 Delegated Action/Urgent Matters

The Register of Decisions taken by Members under the urgency provisions or delegated powers is available on the website in line with the Council's Constitution and Regulation 13 of the Local Authorities (Executive Arrangements) (Meetings and Access to Information) (England) Regulations 2012. The decisions taken and associated information can be found [here](#).

12 Forward Plan (Pages 59 - 68)

In accordance with the Council's Constitution, the Cabinet is requested to review the list of forthcoming business (previously circulated) and to determine which items are to be defined as key and/or framework decisions and included in the Plan from the date of this meeting.

The [Forward Plan is available on the Council's website](#).

PART II - ITEMS WHICH MAY BE TAKEN IN THE ABSENCE OF THE PRESS AND PUBLIC

NIL

Members are reminded that Part II Reports contain exempt information and should therefore be treated accordingly. They should not be disclosed or passed on to any other person(s). They need to be disposed of carefully and should be returned to the Democratic Services Officer at the conclusion of the meeting for disposal.

MEETINGS INFORMATION AND NOTES FOR VISITORS

Getting to County Hall and Notes for Visitors

For SatNav purposes, the postcode for County Hall is EX2 4QD

[Further information about how to get to County Hall](#) gives information on visitor parking at County Hall and bus routes.

Exeter has an excellent network of dedicated cycle routes. For further information see the [Travel Devon webpages](#).

The nearest mainline railway stations are Exeter Central (5 minutes from the High Street), St David's and St Thomas. All have regular bus services to the High Street.

Visitors to County Hall are asked to report to Main Reception on arrival. If visitors have any specific requirements, please contact reception on 01392 382504 beforehand.

Membership of a Committee

For full details of the Membership of a Committee, please [visit the Committee page](#) on the website and click on the name of the Committee you wish to see.

Committee Terms of Reference

For the terms of reference for any Committee, please [visit the Committee page](#) on the website and click on the name of the Committee. Under purpose of Committee, the terms of reference will be listed. Terms of reference for all Committees are also detailed within Section 3b of [the Council's Constitution](#).

Access to Information

Any person wishing to inspect any minutes, reports or background papers relating to an item on the agenda should contact the Clerk of the Meeting. To find this, [visit the Committee page](#) on the website and find the Committee. Under contact information (at the bottom of the page) the Clerk's name and contact details will be present. All [agenda, reports and minutes of any Committee are published on the Website](#)

Public Participation

The Council operates a Public Participation Scheme where members of the public can interact with various Committee meetings in a number of ways. For full details of whether or how you can participate in a meeting, please [look at the Public Participation Scheme](#) or contact the Clerk for the meeting.

In relation to Highways and Traffic Orders Committees, any member of the District Council or a Town or Parish Councillor for the area covered by the HATOC who is not a member of the Committee, may attend and speak to any item on the Agenda with the consent of the Committee, having given 24 hours' notice.

Webcasting, Recording or Reporting of Meetings and Proceedings

The proceedings of any meeting may be recorded and / or broadcasted live, apart from any confidential items which may need to be considered in the absence of the press and public. For more information [go to our webcasting pages](#)

Anyone wishing to film part or all of the proceedings may do so unless the press and public are excluded for that part of the meeting or there is good reason not to do so, as directed by the Chair. Filming must be done as unobtrusively as possible without additional lighting; focusing only on those actively participating in the meeting and having regard to the wishes of others present who may not wish to be filmed. Anyone wishing to film proceedings is asked to advise the Chair or the Democratic Services Officer in attendance.

Members of the public may also use social media to report on proceedings.

Declarations of Interest for Members of the Council

It is to be noted that Members of the Council must declare any interest they may have in any item to be considered at this meeting, prior to any discussion taking place on that item.

WiFi

An open, publicly available Wi-Fi network (i.e. DCC) is normally available for meetings held in the Committee Suite at County Hall.

Fire

In the event of the fire alarm sounding, leave the building immediately by the nearest available exit following the fire exit signs. If doors fail to unlock press the Green break glass next to the door. Do not stop to collect personal belongings; do not use the lifts; and do not re-enter the building until told to do so. Assemble either on the cobbled car parking area adjacent to the administrative buildings or in the car park behind Bellair.

First Aid

Contact Main Reception (Extension 2504) for a trained first aider.

Mobile Phones

Please switch off all mobile phones before entering the Committee Room or Council Chamber

Alternative Formats

If anyone needs a copy of an Agenda and/or a Report in another format (e.g. large print, audio tape, Braille or other languages), please contact the Customer Service Centre on 0345 155 1015 or email: committee@devon.gov.uk or write to the Democratic and Scrutiny Secretariat in G31, County Hall, Exeter, EX2 4QD.

Induction Loop available



COUNTY COUNCIL BUDGET CONSULTATION 2022/23 WITH DEVON'S REPRESENTATIVES OF OLDER PEOPLE AND THE VOLUNTARY SECTOR, TRADE UNIONS AND BUSINESS COMMUNITY (CSO/22/4)

1.0 Recommendation: that the contents of the report and the representations of the consultees be noted.

2.0 Introduction

2.1 The Leader of the Council, Group Leaders and other Members and officers met with the representatives of the Business Community, the Community and Voluntary Sector, and Trade Unions. This was to discuss the County Council's budget for 2022/23 in line with statutory requirements and previous good practice.

3.0 Budget Consultation with Devon Districts

3.1 The Leader of the Council attended 8 meetings during November and December 2021 as part of the budget consultation process. All of these meetings were held remotely with support from the Devon Association of Local Councils, with each of the 8 Devon districts having a dedicated meeting. The meetings were attended by a total of approximately 120 local representatives.

3.2 At each meeting the Leader gave a short presentation of key issues affecting the Council before inviting open questions. The presentation set out the Council's Strategic Plan 2021-25, highlighting six key priorities, and also outlined changes to government funding received, an increase in FTE staff employed by the Council, changes in the Authority's savings, and other key metrics that are covered in more detail below. It was highlighted to attendees at each of these meetings the inflexibility of the 2022/23 budget, some of which was due to the impact of the ongoing COVID-19 pandemic.

3.3 Of the issues that arose at the meetings, some received particular attention, such as:

- highway maintenance, including problems with potholes and drainage especially on Devon's more rural roads. The Leader admitted budgetary constraints (as well as instances of inadequate subcontractor work) had made Highway management and maintenance more difficult in recent years;
- climate change and the environment, where attendees expressed that significant investment would be required across the board to achieve net zero such as, but not limited to: purchasing land for carbon offsetting purposes; the County Council working closely with District and Parish councils to develop a coherent, overarching approach to the development of electric car charging points; and lobbying the Government to financially support the

Agenda Item 7a

strengthening of the energy grid to allow development of green infrastructure; and

- problems regarding affordable homes, such as: homes defined as 'affordable' still being too expensive for ordinary families; that regulations should be placed on people owning second homes such as additional taxation; and that the lack of affordable houses was having observable impacts on employment, making it difficult for people to move into Devon for work.

3.4 Other discussion points included: 20mph speed limits; job shortages, particularly in the public sector, and the relationship between this and the number of available homes; the increasing importance of digital connectivity especially in light of adjusted working arrangements that had become, for many companies, permanent as opposed to an immediate reaction to the Coronavirus pandemic; and parking problems in various localities across Devon.

3.5 Additionally, the existing position of Children's Services, including the SEND deficit and the growing number of children who were eligible for Free School Meals (FSM), was discussed.

4.0 Budget Presentation

4.1 A representative from the office of the Director of Finance gave a presentation on the 2021/2022 budget at each of the three consultative meetings.

4.2 The presentation first highlighted that, since 2013/14, funding given to Devon County Council through the Revenue Support Grant had fallen from £135 million in 2013/14 to around £500,000 in 2019/20, staying at that level since. The presentation also outlined the Council's savings since 2011 and the significant amount of savings that had been built into the 2022/23 budget. It was explained that this was in response to a growing gap between the amount of funding received by the Authority and the cost of meeting its statutory responsibilities. It was clarified to consultees that the Authority, by law, had to maintain a balanced budget, necessitating these savings.

4.3 Additionally the Full Time Equivalent (FTE) staff employed by Devon County Council was presented on; this had dropped from just over 6,500 in 2010/11 to under 4,000 at its lowest point from 2016/17 to 2018/19. It was anticipated to increase to approximately 5,250 in 2022/23.

4.4 The presentation then outlined the Council's currently projected budget position. Between them, Adult Care & Health and Children's Services accounted for 76% of total service budgets. This represented a net change of 10.5% and 10.8% respectively in allocated budget for these service areas. Also highlighted was the ongoing problem surrounding the DSG deficit, forecast at £88.1 millions by 31 March 2022. This was

a growing deficit which had been ringfenced, with central Government yet to indicate how this would be approached after the 2022/23 financial year. Consultees were also advised on the Council's earmarked revenue reserves which were put into the national context via comparison with other Local Authorities.

4.5 Additional funding received by the Council in response to the COVID-19 pandemic was outlined in the presentation, totalling just under £149 million. Consultees were advised that this funding may soon come to an end.

4.6 Overall, the figures that the Government allocated to the Authority in the Provisional Settlement were within £120,000 of the allocations anticipated by the Council. As such there were no significant adjustments expected to be made to the planned budget.

5.0 Representatives of the Business Community: 10 January 2022

5.1 Representatives at this meeting included Tim Jones (South West Business Council), Andrew Dean (University of Exeter), Claire Williamson-Cary (Devon Community Foundation), Dave Britton (Met Office), Sue Wilkinson (Federation of Small Businesses), Richard Church (Exeter College) and Stuart Elford (Devon & Plymouth Chamber of Commerce).

5.2 Issues and questions raised by the group and discussed with County Council representatives included:

- comparisons between pre-Covid funding for Children's Services and Adult Care & Health and current levels of funding;
- concern surrounding the DSG deficit and the future uncertainty of how this would be addressed. Consultees were advised that this was a national problem not exclusive to Devon, but that Devon – as a large Authority – has a larger deficit to address compared to other Local Authorities;
- the amount of additional funding received during the Coronavirus pandemic that had gone to businesses; and
- the similarities between the Council and the private sector in terms of staff shortages and financial constraints, with the importance of a large-scale, co-operative skills plan being noted.

6.0 Representatives of the Voluntary and Community Sector: 11 January 2022

6.1 Representatives at this meeting included Revd Iain McDonald (Devon Faith & Belief Forum), Kev Henman (Space Youth Services), Karen Brooks (Age UK, Exeter), Colin Bray (Libraries Unlimited), Gail Mattocks

Agenda Item 7a

(ECSW), Andy Bowman (UNISON Retired Members), Matt Evans (Active Devon), Darran Hill (TTVS), Nora Corkery (Devon Communities), Ana Lodge (Sunrise Diversity), Caroline Voaden (Devon Rape Crisis) and Andrew Moreman (Young Devon).

6.2 Issues and questions raised by the group and discussed with County Council representatives included:

- a variety of grant schemes being paid to the voluntary sector in arrears which was creating significant problems as many organisations do not have the funds to bankroll opportunities upfront;
- concern that, where savings are made by the Authority in areas such as Adult Care & Health and Children's Services, the responsibility to address resulting shortcomings then falls onto the voluntary sector which was causing strain;
- the impact of staffing shortages, particularly in social work, where higher wages were being offered to fill these vacancies creating an unsustainable 'outbidding culture' and leaving less money remaining for investment in areas such as the voluntary sector;
- whether the Authority had any indication of additional funding being received during the 2022/23 financial year and disseminated across the voluntary sector. It was explained that additional funding often comes with short notice as well as strict regulations as to what it can be spent on, which makes it very hard to incorporate into budget planning; and
- that there were improvements that could be made in simplifying some of the processes that non-profit organisations go through to apply for funding, especially as there are many volunteer and community groups that have small numbers of staff.

7.0 Representatives of the Trade Unions: 11 January 2022

7.1 Representatives at this meeting included Darienne Flemington (UNISON), Steve Ryles (UNISON), David Fitzsimmons (Association of School and College Leaders), Nigel Williams (NASUWT), Anna Harvey-Thomas (GMB) and Julia Neal (National Education Union).

7.2 Issues and questions raised by the group and discussed with County Council representatives included:

- the overall financial context of the Council versus 11 years prior. It was explained that the Council is working from a budget of approximately £20 million less than in 2010 which, when inflationary adjustments and demographic pressures had been factored in, works out at approximately £300 million less in terms of spending power;

- further concern surrounding the DSG deficit;
- how the anticipated increase in FTE staff employed by the Council would be spread across its service areas;
- ongoing concern for staffing shortages, both in areas already explored (particularly social work) and in other areas such as civil enforcement (parking);
- the need for Government priorities to shift towards practical applications of money such as road maintenance and other upkeep, where Government attention seemed to have been on new projects which are not always practical; and
- practical difficulties surrounding sub-contractor work for road maintenance due to both reduced funding and to unstable material prices – namely, that in many instances there was no clear way of planning what contractor services would cost.

8.0 Conclusion

The consultations carried out provided a positive opportunity for the people of Devon to specify their priorities in future service delivery. The DSG deficit and the ongoing impact of the Coronavirus pandemic received much attention, and many other vital issues were explored. The feedback received provided an excellent insight into current opinion on the challenges facing Devon residents and organisations.

Scrutiny Budget Recommendations 2022/23 (CSO/22/5)

Welcomes and supports:

1. The 10.8% net increase in the budget for Children's Services and the 10.5% increase in the budget for the Adult Care and Health Services recognising the huge demand on the system, and the imperative to invest in workforce given the issues with staff recruitment.
2. The negotiations with the NHS to enable one-year additional funding, possibly £10million, to maintain services and support a reduction in unnecessary hospitalisations and achieve timely transitions out of hospital.
3. The ongoing discussions with the Department for Education on the Safety Valve Programme to support the reduction of the deficit in the SEND High Needs Block, and welcomes the agreement anticipated by the end of March 2022.
4. Additional monies in this budget, specifically:
 - 4.1 Capital investments to provide an additional 525 special school places by 2024;
 - 4.2 The additional investment in violence prevention combined with the significant investment in developing the Council's new duties around supporting survivors of domestic abuse'
5. Scrutiny welcomes service productivity specifically:
 - The addition of 200,000 books in Devon's libraries.
 - An additional 500 courses delivered online by Learn Devon.

Record concern:

6. Scrutiny places on record dissatisfaction with the 1-year financial settlement for the Council against demand-led pressures and the resulting challenges in developing strategy without financial certainty and also the unknown grant settlement for Public Health.
7. Cabinet to satisfy itself about the realism of achieving almost £39 million in savings and offset income considering the increase in cost of living, inflation, increases in demand and the cost of the post-covid recovery. Scrutiny is particularly concerned about the potential for cost pressures to lead to budget overspend and the resulting impact upon vulnerable people in Devon as well as the maintenance of roads and safety and highlights the need for the preservation of preventative and routine services.
8. Scrutiny places on record concern with the anticipated additional pressures on the Adult Care and Health Service including:
 - The impact of the cessation of grants including the 'Discharge to Assess' funding from the end of March 2022.
 - Changes to the Liberty Protection Safeguards, replacing the Deprivation of Liberty Scheme, and the current lack of clarity from Government about how this will be funded.

Agenda Item 7b

- The increase in future demand coming through from Children's Services.
- 9. The future of public transport and the viability of routes because of reduced patronage and supports the Cabinet Member in her lobbying endeavours for additional funding for this area. Scrutiny would also like to see additional investment in active travel.
- 10. Record concern about how the impact assessment does not consider safety and access for disabled people.

Cabinet be asked to:

- 11. Rethink the £329,000 reduction in community grant schemes as well as the £2,000 reduction in each Councillor locality budget in order to support partnership working with the communities of Devon.
- 12. Consider the in-year ability to provide additional support to highways maintenance and patching if target savings are on track.
- 13. Continue to maintain support for workforce recruitment and retention, and specifically to;
 - 13.1 Improve housing availability for key staff through Team Devon and engaging with District Council's local plan process.
 - 13.2 promote 'Proud to Care' opportunities with the individuals who have been recruited by the County Council to support the track and trace programme on a temporary basis.
- 14. Continue to lobby for fair funding for Devon children to support them to reach their potential including the large shortfall in Capital investment to maintain the school estate by creating and maintaining quality learning environments.
- 15. Ensure adequate funding is in place to adequately support the significant numbers of vulnerable children who have experienced domestic violence.
- 16. Support joined up working across Council departments for the improvement of youth Services.
- 17. Include means-testing in the proposed charge for disabled parking bays to ensure low-income disabled people are not disadvantaged.
- 18. Explore other authorities' approach to an in-house school transport service with a view to achieving the budget savings attributed to this service.
- 19. Work to minimise the anticipated increase of 4,750 tonnes of municipal waste being disposed of in landfill in 2022/23

DEVON EDUCATION FORUM

19 January 2022

Present:-

Schools Members

Primary Headteachers

Mr A Dobson

Marwood Primary

Mr J Stone

Denbury Primary

Ms R Shaw

Exeter Learning Academy Trust (Academy)

Mr P Walker

First Federation Trust (Academy)

Primary Governors

Ms E Stubbs

Budleigh Salterton, St Peter's CE Primary

Mr A Hines

Rydon Primary (Education SW Trust)(Academy)

Mr I Rogers

Exminster Primary

Secondary Headteachers

Mrs S Crook

Federation of Tiverton Schools

Mr A Davis

Exmouth CC (Academy)

Ms L Heath

Uffculme Academy Trust (Academy)

Mr G Hill

Ventrus Multi Academy Trust (Academy)

Secondary Governors

Ms J Elson

Exmouth CC (Academy)

Mrs J Larcombe

Uffculme Academy Trust (Academy)

Mr A Walmsley

The Ted Wragg Multi Academy Trust (Academy)

Nursery School

Mrs S Baker

Westexe

Special Headteacher

Mr K Bennett

Marland School

Special Governor

Mrs F Butler

Marland School **(Chair)**

Alternative Provision

Mr R Gasson

WAVE Multi Academy Trust

Non-Schools Members

Mr B Blythe

PETROC

Ms G Rolstone

Early Years, Private & Voluntary Independent

Observer

Councillor A Leadbetter

Cabinet Member – Children's Services and Skills

Agenda Item 7c

2

DEVON EDUCATION FORUM

19/01/22

Apologies

Ms K Brimacombe
Mr J Clements
Ms S Lockwood

Whitchurch Primary
Cranbrook, St Martin's CE Primary
Exeter Diocesan Board of Education

22 Minutes

DECISION:

That the minutes of the meeting held on 17 November 2021 be signed as a correct record.

23 Matters Arising from the Last Meeting and Report back on Issues Raised with Cabinet/f40

-

24 Membership

DISCUSSION:

The Chair welcomed Mr Rogers and Ms Rolstone (as below), together with Ms Angie Sinclair, recently appointed Director of Finance.

The following membership changes noted:-

(a) Election of the following to fill vacancies:-

Mr I Rogers – maintained primary governor (substitute member)
Mr J Clements - maintained primary governor; and

(b) Ms S Barreto, faith schools (substitute member) resignation.

25 Head of Education & Learning Update

DISCUSSION:

The Head of Education & Learning reported on the secondary school exclusions data analysis and details of LA support (as set out within the Education Termly Report included on the agenda).

Exclusions data monitoring did not indicate a significant increase in permanent exclusion (PEX) amongst pupils with an Education Health & Care Plan (EHCP). There had been a slight increase in pupils with SEN support but

not out of line with the national comparison. Suspensions (previously known as Fixed Term Exclusions) had increased but were better than nationally, whilst PEX remained high overall.

Devon's Inclusion Team had had positive meetings with individual schools where exclusion was higher, discussing alternatives to exclusion and support. Exclusion levels were being closely monitored over the Spring term 2022 to try to prevent an increase following pupils return to school.

School attendance across schools this term started at 94% but there was now a significant rise in Covid related absences amongst pupils.

26 Finance Update

DISCUSSION:

(a) The Forum received the minutes of the Schools Finance Group (SFG), 5 January 2022, noting the respective minutes in relation to report (DEF/22/01);

(b) The Forum considered the report of the Chief Officer for Children's Services and County Treasurer (DEF/22/01).

The Report (DEF/22/01) covered:-

- The month 8 outturn forecast for 2021/22 saw a significant overspend in the overall Dedicated Schools Grant (DSG) of £39.1 million associated with the continued demand on High Needs and the growing demand on Special Educational Needs (SEN) placements within the Independent Sector despite creating more places within Devon's Special Schools.
- The cumulative DSG deficit projected to March 2022 had therefore increased to £88.1 million.
- The High Needs Block saw a further increase of £3.1 million since month 6 due to increased EHCP demand identified in SEN Mainstream, top-up funding uplift for Mainstream Special Schools and increased costs in Independent settings.
- The Management Action had reduced by £700,000 to £2 million due to recognising 50% of the Social Care and Health contributions for Independent placements. The remaining actions were expected to be delivered in 2021/22.
- The increasing DSG deficit in-year could have a considerable impact on future education budgets within the DSG as well as impacting on the financial sustainability for Devon County Council. An urgent action was still required to reduce the demand on Education Health Care Plans (EHCPs) and Independent placements.

A Member asked about the EHCP cost and volume analysis within maintained schools (Appendix A to the Report (DEF/22/01)). Whilst recognising the benefits of individual plus packages, these were a growing area costing £10k

Agenda Item 7c

4

DEVON EDUCATION FORUM

19/01/22

each and Members sought assurance these were applied for and allocated in a consistent manner.

The Head of Education & Learning advised that plus packages were for pupils with a higher level of need, overseen by a moderator and in cases of disagreement by a panel. Sometimes packages were in direct response to pupils awaiting the availability of a maintained special school place.

DECISION:

(a) that month 8 DSG monitoring position as set out in report (DEF/22/01) sections 1 to 4 be noted; and

(b) that an update on the monitoring of EHCP plus packages be made to the Schools Finance Group.

ACTION:

Head of Education & Learning (Julia Foster and Heidi Watson Jones) - (b).

27

DSG 2022-2023 Budget Planning

DISCUSSION:

The Forum considered the joint Report of the Chief Officer for Children's Services and Director of Finance (DEF/22/02) on the current position of the:-

DSG Deficit & Management Plan
DSG Settlement 2022/23
Schools Block
Central School Services Block
High Needs Block
Early Years Block
Other Schools Grants
Carry Forward Decisions.

The Director of Finance advised that in relation to the Schools Block and sparsity values (section 3 of Report (DEF/22/02)) and Devon's October 2021 consultation with schools based on July 2021 pupil census data and sparsity values then considered (and at the Forum's meeting 17 November 2021), the DfE's recently received latest Authority Proforma Tool included the updated 2021 October pupil census. This had occurred since SFG met on 5 January 2022 and so had not yet been considered in detail by its members. The revision now made it clear the LA was unable to assign all the factors within the sparsity allocations as there were additional schools eligible for sparsity that were not identified using the July 2021 data, resulting in an overall shortfall in the funding envelope of £1.1m. Officers therefore recommended a change in the sparsity rates to that used in 2021/22, calculated to ensure that Devon schools saw the best funding position with the funding available.

Appendix A to Report (DEF/22/02)) gave a breakdown of impact on individual schools.

The Director of Finance further advised that information had been received from the DfE last week, seeing a removal of 50% in 2022/23 of the maintained schools School Improvement Grant and removal in full from 2023/24. It was therefore recommended that £317,500 (50%) be funded from the Financial Intervention Panel Schools (FIPS), £2.5m surplus as a one off in 2022/23 only, whilst more detailed consideration be given to funding for 2023/24.

Members' discussion included:-

-a wish to more fully understand the DfE's revised Tool and sparsity criteria, modelling options. equitability and impact on individual schools, before a decision was made, bearing in mind a change was proposed from the schools consultation;

-that the potential budgetary difficulties, particularly for small rural schools, of a revised sparsity allocation at this stage when setting budgets;

-clarification was sought on whether the DfE revision and timing had affected other LAs adversely;

-that the DfE deadline requiring Devon to submit a decision was this Friday, 21 January 2022; and

-that in respect of the School Improvement Grant DfE reduction, members would consider supporting funding from the FIPS surplus as a one off in 2022/23 only.

(There was a short adjournment pending further advice on potentially not reaching a decision today on sparsity rates given the imminent DfE deadline of 21 January 2021).

DECISION:

(a) that the Dedicated Schools Grant (DSG) Deficit as set out in section 1 of Report (DEF/22/02) be noted;

(b) that the DSG 2022/23 announcement on 17 December 2021 as set out in section 2 of Report (DEF/22/02) be noted;

(c) that further data and model options on Schools Block sparsity rates be sent to members for consideration, inviting them to submit their response via email by noon, Friday 21 January 2022, so that Devon may respond to the DfE deadline of the same date (**see Notes 1* and 2** below**);

(Vote: Schools, Academies and PVI members)

Agenda Item 7c

6

DEVON EDUCATION FORUM

19/01/22

(d) that the Central School Services Block, High Needs Block and Early Years Block as set out in section 4 to 9 of Report (DEF/22/02) be noted; and

(e) that as a one off 2022/23 only, £317,500 (50%) School Improvement Grant be funded from the Financial Intervention Panel Schools (FIPS) surplus, whilst more detailed consideration be given to funding for 2023/24, following DfE notification of reduced grant.

***Note 1:** outcome of DEF member Sparsity rates responses in (c) above was:-

that Cabinet be recommended:-

that Option D (as set out in paragraph 3.8 of the Sparsity additional supporting document) to reinstate the sparsity rates to that used in 2021/22 and use the National Funding Formula (NFF) calculation to ensure that Devon schools move as close to the National Funding Formula as possible, whilst remaining in the funding envelope available be approved.**

(Vote: Schools, Academies and PVI members)

****Note 2:** (Forum Members wished to place on record that in reaching their decision they acknowledged that the funding model proposed in consultation was unable to be implemented following the release of the latest Authority Proforma Tool from the DfE. When presented with the two affordable funding formulas (Option D and E) Members supported the LA's recommendation to apply option D. This was because this provided the most favourable opportunity for school finance in future years to eventually meet the requirements of the National Funding Formula.

Forum Members would like the further data and model options now circulated to be further considered at the next Schools Finance Group meeting. It was critical that the Local Authority communicate this information to schools in a timely and sensitive manner).

ACTION:

Director of Finance (Adrian Fox) (c), (d); County Solicitor (Fiona Rutley) (c).

28 DSG Management Plan

DISCUSSION:

The Forum considered the joint Report of the Chief Officer for Children's Services and Director of Finance (DEF/22/03) including overview, management actions and risks.

In responding to a member's question regarding the Devon now being part of the 2nd tranche of the Safety Valve Intervention Programme (section 4 of Report (DEF/22/03)), the Director of Finance reported on meetings with the

DfE, welcoming the experience and best practice of other LAs, to support a service improvement plan to bring about the best outcomes for children within resources. Whilst Devon was at an early stage of the process this was a positive step towards managing the High Needs Block deficit.

DECISION:

that month 8 of the DSG Deficit Management Plan be noted.

29 DSG Management Plan Governance (minute 16(b))

This matter was discussed under the preceding item (minute no 28).

30 SEND 100 Project Progress (minute 14(b))

DISCUSSION:

The Forum received a presentation regarding the project's progress to date, to build long term SEND sustainability and confidence, working together alongside mainstream schools and families. Members noted some recruitment challenges and staffing capacity and its impact on the timetable.

In relation to outreach it was noted that some specialist maintained settings were doing their own outreach work on a non charged basis due to some current arrangements which meant they did not have the capacity to support the project. Whether this would continue on an individual settings or a Devon approach would be kept under review.

ACTION:

Head of Education & Learning (Dawn Stabb)

31 Standing (and other) Groups

The Forum received the following from standing group:-

School Organisation, Capital and Admissions (SOCA)

Minutes of the meeting held on 7 December 2021.

32 Correspondence

-

Agenda Item 7c

8

DEVON EDUCATION FORUM

19/01/22

33 **Dates of Future Meetings**

Please check venue/arrangements (see Calendar link) as these are subject to change:

<https://democracy.devon.gov.uk/mgCalendarMonthView.aspx?GL=1&bcr=1>

Meetings held at 10am:

Wednesday 16 March 2022

Wednesday 22 June 2022

Wednesday 23 November 2022

Wednesday 18 January 2023

Wednesday 22 March 2023.

NOTES:

1. *Minutes should always be read in association with any Reports for a complete record.*
2. *If the meeting has been webcast, it will be available to view on the [webcasting site](#) for up to 12 months from the date of the meeting*

* **DENOTES DELEGATED MATTER WITH POWER TO ACT**

The Meeting started at 10.00 am and finished at 12.50 pm

ADMISSION & EDUCATION TRANSPORT POLICIES FOR 2023-24

Report of the Head of Education and Learning

Please note that the following recommendations are subject to approval by the Cabinet and confirmation under the provisions of the Council's Constitution before taking effect.

1. Note that the admission arrangements were proposed and consulted on for the Local Authority.
2. Approve the recommendations as laid out in [section 2](#)

1. PURPOSE OF REPORT

- 1.1 The Local Authority (Devon LA) has a statutory responsibility to propose, consult on and determine admission arrangements for Community and Voluntary Controlled (VC) schools and co-ordinated admission schemes for the normal round of admissions to all state-funded schools. Consultation in Devon is held ahead of the statutory deadline for consideration by Cabinet. Schools which are their own admissions authority (Foundation, Voluntary Aided, Academies and Free schools, University Technical Colleges and Studio Schools) are responsible for their own arrangements and determined by the governing boards and academy trusts.
- 1.2 Amendments were made to admission arrangements for 2021-22 and 2022-23 following a revision of the Admissions Code, which came into force from 1 September 2021, and renewed guidance from the Department for Education. Specifically, these changes were:
 - a) Adding to the children in care oversubscription priority: children who appear to the admission authority to have been in state care outside England and ceased to be in state care as a result of being adopted;
 - b) Adding a statutory requirement that decisions on in-year admissions application be communicated to parents and carers within 15 school days and with an aim of 10 school days;
 - c) Adding provision to manage applications submitted from overseas or for children of nationalities other than the United Kingdom or the Republic of Ireland.
- 1.3 There have been no further changes to legislation or guidance and so arrangements for 2023-24 are based on the arrangements for 2022-23.
- 1.4 This paper is to report the outcome of the consultation on primary and secondary school admission arrangements for 2023-24 and the co-ordination of primary and secondary school admissions. It also seeks approval to the schemes. Admission to special schools and fee-paying independent schools falls outside the scope of these arrangements.
- 1.5 This paper also recommends Education Transport Policies for 2023-24.

Agenda Item 8

2. RECOMMENDATIONS

2.1 Members are requested to:

- a) approve the Published Admission Numbers for community and VC schools for 2023-24 (see [Appendix One](#))
- b) approve the catchment areas for community and VC schools for 2023-24 with detailed amendments (see [Appendix Two](#) and [Appendix Three](#))
- c) approve the admissions timetable for the next year (see [Appendix Four](#))
- d) determine the normal round co-ordinated admissions scheme for 2023-24 (see [Appendix Five](#))
- e) determine the in-year co-ordinated admissions scheme for 2023-24 (see [Appendix Five](#))
- f) approve the Education Transport Policies for 2023-24 (see [section 6](#))

3. CONSULTATION ON ADMISSION ARRANGEMENTS

- 3.1 Education Authorities have a statutory requirement to consult annually on their admission arrangements and to determine them by the end of February. Devon consulted on the proposed admission arrangements for community and VC schools for which it is the admission authority and on the proposed co-ordinated admission schemes for primary and secondary schools. Where a school converts to academy status after determination, the published admission arrangements remain in place until the next admissions round.
- 3.3 An email was sent to schools at the beginning of November 2021, notifying them that the consultation website was live. Details of the Consultation on the admission arrangements took place from the beginning of November 2021. Consultations were also sent electronically to all neighbouring Local Authorities, Church of England and Roman Catholic Dioceses and other required consultees. The Devon Education Forum has been consulted through reporting to the School Organisation, Capital and Admissions Forum.
- 3.4 The consultation website set out all aspects of the proposed admission arrangements and enabled schools and other consultees to respond to the proposals online via email direct to Devon. Responses were required by 7 January 2022 in order to allow consultees time to respond after a full assessment of those consultations.
- 3.5 An advert was also placed in the Western Morning News in November 2021.
- 3.6 All community and voluntary controlled schools were sent a link to an admissions policy document for the school for 2023-24, drafted on the same lines as those for LA own-admission authority schools.
- 3.7 A letter was sent to each home address where there was a proposal to amend the catchment area for 2023-24. See [Sections 4.5 and 4.6](#).
- 3.7 The number of responses received remains low as Devon's arrangements have been consistent for a number of years with substantive amendments being introduced gradually and with consultation. Feedback from schools suggests that they are largely content with matters such as oversubscription criteria, Published Admission Numbers, catchment areas and the application process. Devon works closely with Diocese, headteacher and governor representatives throughout the year, discussing policy matters. A number of responses were received with regard to specific local admissions

issues, detailed at www.devon.gov.uk/admissionarrangements. This is in common with neighbouring Local Authorities.

- 3.8 The Admissions Team works collaboratively with all schools/Trusts who are their own Admissions Authority to ensure their arrangements are compliant with the Admissions Code

4. CO-ORDINATED ADMISSION ARRANGEMENTS 2023-24

- 4.1 Devon is required under the School Admissions Code to co-ordinate all normal round admissions to state-funded schools, with the exception of new Free Schools where the Department for Education's instruction is to not coordinate in the first year of opening. Devon has consulted annually on co-ordinated admissions schemes for primary and secondary schools; the proposed scheme for 2023-24 was a combined scheme for the Normal Round of Admissions into all state-funded schools. Normal round is the first opportunity to be admitted into any school, such as at the beginning of Reception, Year 3 for junior schools and Year 7 for secondary schools. It also includes Year 7 for all-through schools. It brought forward the arrangements from the previous academic year with some amendments, detailed at [Appendix Five](#). On average, the co-ordinated schemes manage 7,500 primary admissions, 7,000 secondary admissions and 6,500 in-year admissions each year.
- 4.2 Devon's arrangements oversaw 14,474 applications for Devon-resident children for the 2021-22 normal round of admissions for all schools and academies. The percentage of children who received a place at the school preferred by the parent remains significantly above the most recent national averages¹.

	2019-20		2020-21		2021-22	
	Nationally	Devon	Nationally	Devon	Nationally*	Devon
Secondary						
Applications	604,500	7346	600,352	7475		7419
First preference offered	80.9%	94%	82.2%	92.6%		91.2%
Any preference offered	93%	98%	95.6%	97.4%		97.6%
Primary						
Applications	609,000	7272	612,146	7581		7055
First preference offered	90.6%	97%	90.2%	94.6%		97.6%
Any preference offered	97.5%	99%	97.8%	98.3%		99.6%

*The data for national allocations for 2021 have not yet been released.

- 4.3 Local Authorities are not required to co-ordinate in-year admissions to all state-funded schools. Devon manages in-year applications for community and VC schools and extends this facility to all state-funded mainstream schools. The purpose is to enable parents to apply for one or more schools at the same time and promote a fair, transparent and lawful admissions process for all children in the county. By doing so, Devon seeks to minimise instances where children, in particular vulnerable children, are missing education and to ensure compliance with the School Admissions Code and School Admissions Appeals Code. Devon has consulted annually on an in-year co-ordinated admissions scheme; the proposed scheme for 2023-24 was brought forward from the previous academic year. As an integral part of a fair, legal and transparent admissions

¹ Taken from <https://www.gov.uk/government/statistics/secondary-and-primary-school-application-and-offers-2018> and <https://www.gov.uk/government/statistics/secondary-and-primary-school-application-and-offers-2020>.

Agenda Item 8

service, Devon-wide in-year co-ordination forms a part of the Admissions Traded Service with all schools.

- 4.4 Published Admission Numbers (PANs) were proposed for community and VC schools, taking into account the accommodation available, expected local demand, sensible organisation, a strategic overview of the number of places in an area, the constraints of Key Stage One Class Size Legislation and the flexibility to increase PANs where this becomes necessary. The proposed PANs are listed at [Appendix One](#) and can be found in the individual admissions policy document for each school at <http://devon.cc/schoolpolicy>
- 4.5 The proposed catchment areas for community and VC schools were brought forward from the previous academic year with minor amendments to the boundaries of the following schools:

Abbotskerswell Primary School
Berry Pomeroy Parochial Church of England Primary School
Bishopsteignton School
Bradley Barton Primary School and Nursery Unit
Chudleigh Church of England Community Primary School
Cornwood Church of England Primary School
Decoy Primary School
Denbury Primary School
Haytor View Community Primary School
Highweek Community Primary and Nursery School
Kingsbridge Community Primary School
Kingskerswell Church of England Primary School
Ladysmith Infant and Nursery School
Ladysmith Junior School
Loddiswell Primary School
Malborough with South Huish Church of England Primary School
Modbury Primary School
Shaugh Prior Primary School
St Michael's Church of England Primary School, Kingsteignton
Stoke Hill Infant and Nursery School
Stoke Hill Junior School
Stokeinteignhead School
Stokenham Area Primary School
The Grove Primary School

A map for each school showing the 2022 determined boundary and the recommended 2023 boundary is included at [Appendix Two](#). These changes have been required due to the updating of area maps through digital technology and also to reflect the impact of house building or new roads.

The impact of amendments to the map boundaries is included at [Appendix Three](#).

The purpose of the amendments was to remove instances where the boundaries cross through fields or individual properties, reducing ambiguity for communities, the local authority or schools themselves. Amendments were kept to a minimum and allow boundaries to follow recognisable geographical features such as roads and footpaths, the edges of fields and wooded areas, streams and watercourses and the boundaries of properties.

- 4.6 Complimentary amendments were drafted for the following own admission authority schools so that catchment areas for the named schools in the South Hams and Teignbridge areas do not overlap as a consequence of the exercise:

Aveton Gifford CofE Primary School
Bickleigh Down Church of England Primary School
Blackawton Primary School
Blackpool Church of England Primary School
Broadhempston Village Primary School
Charleton Church of England Academy
Chudleigh Knighton Church of England Primary School
Dartington Church of England Academy
Dartmouth Academy (primary phase)
Diptford Parochial Church of England Primary School
East Allington Primary School
Ermington Primary School
Harbertonford Church of England Primary School
Holbeton Primary School
Ipplepen Primary School
Landscope Church of England Primary School
Manor Primary School, Ivybridge
Marldon Church of England Primary School
Newton Ferrers Church of England Primary School
Rydon Primary School
Salcombe Church of England Primary School
Shaldon Primary School
Sherford Vale School
South Brent Primary School
St Mary's Church of England Primary School, Brixton
Stoke Fleming Community Primary School
Stoke Gabriel Primary School
Stowford School
Teign School
Teignmouth Community School, Exeter Road
Totnes St John's Church of England Primary School
Ugborough Primary School
Wembury Primary School
West Alvington Church of England Academy
Wolborough Church of England (Aided) Nursery and Primary School
Woodlands Park Primary School
Yealmpton Primary School

The catchment areas for secondary schools are made up of the catchment areas of feeder primary schools. The following own-admission authority secondary schools are affected by the proposals:

Coombeshead Academy
Dartmouth Academy (secondary phase)
Ivybridge Community College
King Edward VI Community College
Kingsbridge Community College
Newton Abbot College
South Dartmoor Community College
Tavistock College
Teign School
Teignmouth Community School, Exeter Road

Agenda Item 8

The responsibility for determining the admission arrangements for the schools listed at section 4.6 lies with the governing bodies and academy trusts for those schools.

Officers are in continuing discussions to support own-admission authority schools regarding their policies for 2023-24, which also need to be determined by the end of February. This occasionally includes challenge to ensure compliance with the School Admissions Code.

- 4.7 The primary and secondary co-ordination schemes have statutory deadlines. They must be determined by the end of February ahead of applications in September (2022) for admission the following September (2023). This has been taken into account in a timetable for the admissions process which is detailed at [Appendix Four](#).

5. OWN ADMISSION AUTHORITY SCHOOLS

- 5.1 Many schools in Devon are responsible for their own admissions policy and decisions in response to admissions applications. These are academy, free, studio, voluntary aided and foundation schools and university technical colleges (UTCs). At the time of writing, there were²:

Academy schools	179
Foundation schools	36
Free schools	10
Studio schools	1
University Technical College	1
Voluntary Aided	27
	254

There remain a number of schools for which Devon is the admissions authority:

Community	70
Voluntary Controlled	30
	100

- 5.2 All LAs have a responsibility under the School Admissions Code to collate and publish the admission arrangements of all schools, including own admission authority schools. Devon meets this requirement by publishing a copy of all policies at <http://devon.cc/schoolpolicy> and reviews the policies of all schools to ensure that they are legally compliant. Where the DCC Admissions Service identifies that any part of a school's admission arrangements may be unlawful, it will raise the issue with the school's admissions authority and seek amendments to make the arrangements lawful. Where agreement is not reached, a decision on whether to formally object to the arrangements to the Office of the Schools' Adjudicator will be made and also, where appropriate, representations are made to the Regional School Commissioner and Education & Skills Funding Agency; to date this has not been necessary.
- 5.3 The first stage of the compliance process is to work closely with own admission-authority schools with their admissions policies. Where amendments are made to policies for community and VC schools, they are recommended to all own-admission authority

² School types data is taken from the Department for Education's *Get Information About Schools* website for Devon schools and academies.

schools. In most cases, Devon formulates the policy for own-admission authority schools to consider and approve. Support for own-admission authority schools has included scrutiny, advice and challenge as necessary.

6. EDUCATION TRAVEL ARRANGEMENTS

- 6.1 In previous years, the education transport policy has been included in the admissions consultation and Members have been requested to consider them at the same time. The arrangements proposed for 2023-24 for statutory age children and Post-16 students are those previously determined for 2022-23.
- 6.2 There are no substantive amendments to the education transport policies. Financial costs and charges will be kept under constant review.

7 FINANCIAL CONSIDERATIONS

- 7.1 There are no direct financial considerations of this report.

8 SUSTAINABILITY CONSIDERATIONS

- 8.1 The admissions policy supports the principle of providing local places at local schools.

9 EQUALITY CONSIDERATIONS

- 9.1 Equality of access to education opportunities is a fundamental feature of school admission arrangements and the education transport policies. All policies for consideration have been subject to an Equality Impact Needs Assessment, at www.devon.gov.uk/admissionarrangements.
- 9.2 Increasingly in a more autonomous school system, all LAs will need to ensure schools comply with the Admissions Code and be prepared to challenge practice that is neither legal nor inclusive.

10 LEGAL CONSIDERATIONS

- 10.1 School admission arrangements are a statutory function of Devon County Council. Setting fair, transparent and legal co-ordinated admission arrangements ensures that Devon meets its duty and enables parents, schools and other interested parties to have confidence in them.
- 10.2 The admission arrangements have been proposed and the subject of consultation under requirements of the statutory School Admissions Code 2021. Arrangements must be determined by Devon by 28 February and must be compliant with the statutory requirements of the Code. The amendments to policies are compliant with the Code.

11 RISK MANAGEMENT CONSIDERATIONS

- 11.1 The key risk is that admission arrangements are not determined by the statutory date of 28 February. This would mean that Devon County Council was not compliant with the requirements of the Code. It would be liable to censure from the Department for Education and the Office of the Schools' Adjudicator (OSA).
- 11.2 By not determining compliant arrangements, Devon parents and schools would be a) unable to plan effectively for the next school admissions round in 2023-24, applications

Agenda Item 8

for which will open in the autumn 2022 or b) to effectively plan for in-year admissions during 2023-24. This would be a failure of the Education Authority to formulate and manage a fair and transparent admissions system. Furthermore, Devon's neighbours would have cause for concern that Devon may not meet its duty to co-ordinate arrangements for admissions across local authority boundaries. Action on the recommendations addresses this risk.

- 11.3 During restrictions in place during the Covid-19 pandemic, the risk of children not accessing appropriate education has been managed by the Admissions Service working alongside other teams within Education and Learning. The LA has continued its work through the usual School Admissions annual cycle on a "business as usual" basis during the restrictions under Covid-19. All statutory deadlines have been met – consultation and determination of policies, application windows for normal round admission into schools and appeals have been scheduled within the required timescales. The allocation of in-year admission places has worked within Department for Education guidance and allowed for vulnerable and key worker children to access new schools as necessary for continued education on site while other children have been offered remote learning by their schools.
- 11.4 Eligibility to transport to and from school has continued to be managed by the Transport Co-ordination Service which has worked to reduce the risk of transmission among passengers and vehicle operators. Those children who have been able to access on-site education have had continued provision with all concerned introducing processes to socially distance as far as possible and to initiate enhanced cleaning schedules.

12. CONCLUSION

- 12.1 Devon County Council has a broad and constantly changing role in school admissions with a priority for ensuring timely access to statutory aged education.

The recommendations in this paper will ensure Devon County Council meets its statutory responsibilities in respect of school admissions as well as this broader role in supporting children and young people.

Dawn Stabb
Head for Education and Learning

ELECTORAL DIVISION: All

Cabinet Member for Children Services and Schools: Councillor Andrew Leadbetter

Contact for enquiries: Andrew Brent, Senior Policy Officer 01392 383000

Local Government Act 1972. Background Papers:

Appendix One – Proposed Published Admission Numbers for Community and Voluntary Controlled schools

Published Admission Numbers can also be viewed as part of each school’s admissions policy for each academic year, published at <http://devon.cc/schoolpolicy>

DfE number	Type	School name	PAN 2022	PAN 2023	recommended changes for 2023
2400	C	Abbotskerswell Primary School	15	15	
2201	C	Ashwater Primary School	8	8	
2206	C	Beaford Community Primary & Nursery School	15	15	
3053	VC	Berrynarbor Church of England Primary School	12	12	
3101	VC	Berry Pomeroy Church of England Primary School	15	15	map amendment
2210	C	Bishops Nympton Primary School	10	10	
2402	C	Bishopsteignton School	30	30	map amendment
2717	C	Bolham Community Primary School	16	16	
2404	C	Bovey Tracey Primary School	40	40	
2002	C	Bow Community Primary School	20	20	
2472	C	Bradley Barton Primary School and Nursery Unit	60	60	map amendment
3001	VC	Brampford Speke Church of England Primary School	10	10	
3002	VC	Branscombe Church of England Primary School	10	10	
3003	VC	Broadhembury Church of England Primary School	8	8	
3004	VC	Burlescombe Church of England Primary School	12	12	
2476	C	Canada Hill Community Primary School	45	45	
2007	C	Cheriton Fitzpaine Primary School	15	15	
3105	VC	Chudleigh Church of England Community Primary School	60	60	
3777	C	Clyst Heath Nursey and Community Primary School	45	45	
2009	C	Clyst St Mary Primary School	30	30	
3152	VC	Cornwood Church of England Primary School	15	15	map amendment
2025	C	Countess Wear Community School	45	45	
2015	C	Culmstock Primary School	20	20	
2431	C	Decoy Primary School	60	60	map amendment
2416	C	Denbury Primary School	17	17	map amendment
2223	C	East Anstey Primary School	7	7	

Appendix One – Proposed Published Admission Numbers for Community and Voluntary Controlled schools

2207	C	East-The-Water Community Primary School	60	60	
2420	C	Exminster Community Primary	60	60	
3059	VC	Georgeham Church of England (VC) Primary School	15	15	
3060	VC	Goodleigh Church of England Primary School	10	10	
3061	VC	Great Torrington Bluecoat Church of England Primary School	75	75	
2604	C	Gulworthy Primary School	12	10	to reduce PAN from 12 to 10
2228	C	Halwill Community Primary School	15	15	
2605	C	Hatherleigh Community Primary School	30	30	
3779	C	Haytor View Community Primary School	30	30	map amendment
2012	C	Hayward's Primary School	60	60	
2448	C	Hazeldown School	60	60	
			60	45	school response to consultation to reduce PAN
2432	C	Highweek Community Primary and Nursery School			
3063	VC	Holsworthy Church of England Primary School	45	45	
2048	C	Honiton Primary School	60	60	
2231	C	Horwood and Newton Tracey Community Primary School	14	14	
3065	VC	Ilfracombe Church of England Junior School	105	105	
2232	C	Ilfracombe Infant and Nursery School	120	120	
3013	VC	Kentisbeare Church of England Primary School	25	25	
2234	C	Kentisbury Primary School	8	8	
2050	C	Kilmington Primary School	15	15	
2425	C	Kingsbridge Community Primary School	60	60	
3112	VC	Kingskerswell Church of England Primary School	60	60	map amendment
2026	C	Ladysmith Infant and Nursery School	90	90	map amendment
2027	C	Ladysmith Junior School	90	90	map amendment
3154	VC	Lamerton Church of England Voluntary Controlled Primary School	8	8	
2079	C	Landscore Primary School	60	60	
2237	C	Langtree Community School and Nursery Unit	12	12	
2612	C	Lifton Community Primary School	25	25	
3028	VC	Littleham Church of England Primary School	30	30	
2428	C	Loddiswell Primary School	15	15	map amendment

Appendix One – Proposed Published Admission Numbers for Community and Voluntary Controlled schools

3014	VC	Lympstone Church of England Primary School	30	30	
3114	VC	Malborough with South Huish Church of England Primary School	15	15	map amendment
2622	C	Mary Tavy and Brentor Community Primary School	15	15	
2614	C	Milton Abbot School	15	15	
2715	C	Modbury Primary School	30	30	map amendment
2239	C	Monkleigh Primary School	15	15	
2054	C	Newton Poppleford Primary School	30	30	
2055	C	Newton St Cyres Primary School	20	20	
2029	C	Newtown Primary School	30	30	
3015	VC	Offwell Church of England Primary School	17	17	
3066	VC	Parracombe Church of England Primary School	8	8	
3016	VC	Payhembury Church of England Primary School	15	15	
2205	C	Pilton Infants' School	60	60	
3017	VC	Plymtree Church of England Primary School	15	15	
2059	C	Sandford School	30	30	
2060	C	Seaton Primary School	60	60	
2618	C	Shaugh Prior Primary School	10	10	map amendment
2243	C	Shebbear Community School	10	10	
2244	C	Shirwell Community Primary School	8	8	
2062	C	Shute Community Primary School	12	12	
4011	C	Sidmouth College	150	150	
			Yr 12: 10	Yr 12: 10	
3022	VC	Silverton Church of England Primary School	20	20	
2245	C	South Molton Community Primary School	45	45	
2242	C	St Giles-on-the-Heath Community School	15	15	
3069	VC	St Mary's Church of England Primary School, Bideford	60	60	
3128	VC	St Michael's Church of England Primary School	60	60	map amendment
3024	VC	Stoke Canon Church of England Primary School and Pre-school	20	20	
2033	C	Stoke Hill Infant and Nursery School	90	90	map amendment
2034	C	Stoke Hill Junior School	90	90	map amendment
2445	C	Stokeinteignhead School	15	15	

Appendix One – Proposed Published Admission Numbers for Community and Voluntary Controlled schools

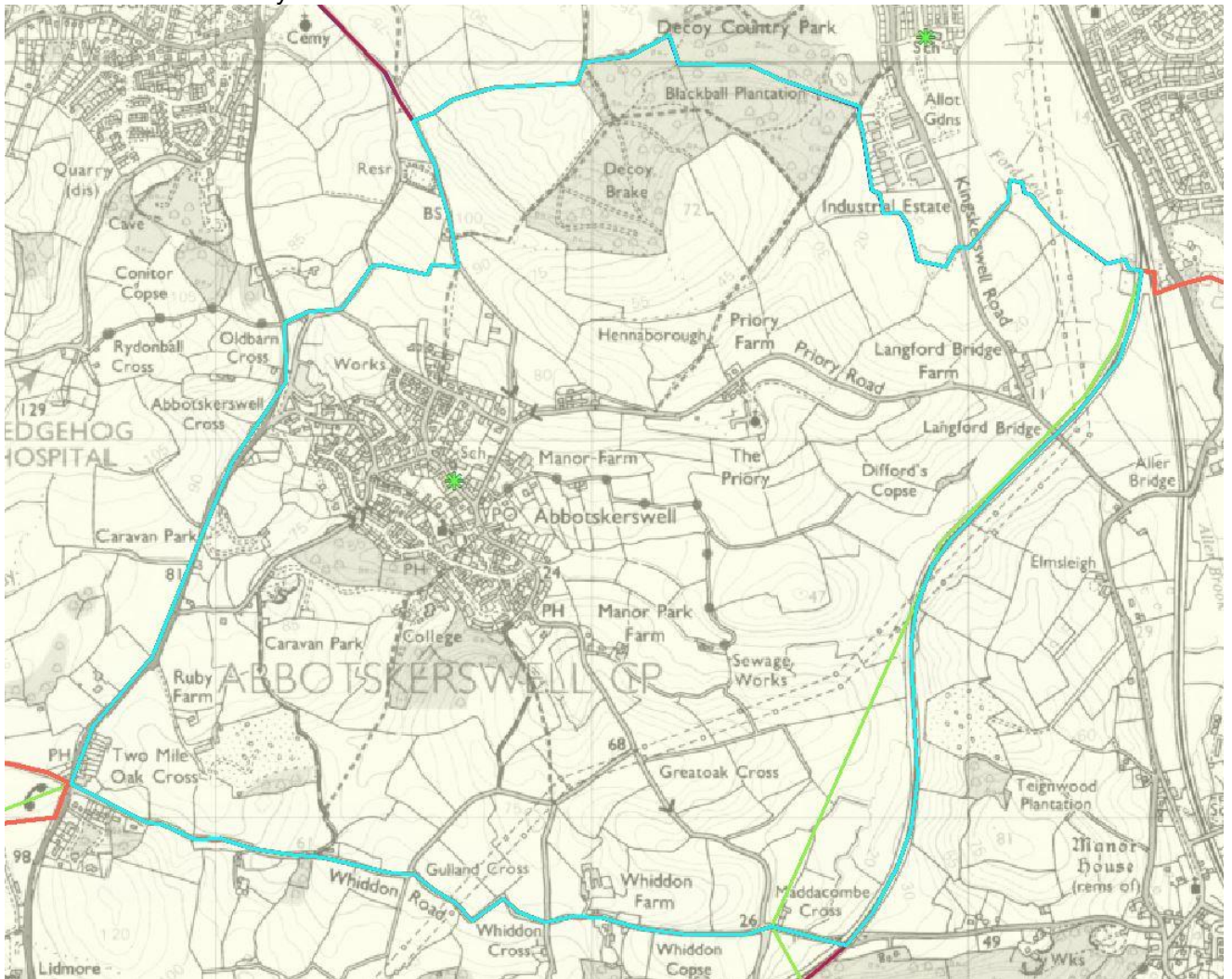
2446	C	Stokenham Area Primary School	30	30	map amendment
2609	C	The Erme Primary School	25	25	
2461	C	The Grove Primary School	45	45	map amendment
2090	C	The Topsham School	30	30	
3025	VC	Thorverton Church of England Primary School	15	15	
3026	VC	Uplowman Church of England Primary School	8	8	
2073	C	Upottery Primary School	15	15	
2209	C	West Croft School	90	90	
2249	C	West Down School	15	15	
2074	C	Whimble Primary School	20	20	
2075	C	Willand School	60	60	
2724	C	Willowbrook School	60	60	
3011	VC	Withycombe Raleigh Church of England Primary School	90	90	
3375	C	Wynstream School	60	60	

Agenda Item 8

Appendix Two – Recommended catchment area amendments for Community and Voluntary Controlled schools

Below are maps showing the determined catchment boundary for 2022-23 in green and the recommended boundaries for 2023 in blue. Maps are screenshots from the Devon school area mapping system at [DCC School Designation Areas - 2023-2024 \(devon.gov.uk\)](https://devon.gov.uk/DCC_School_Designation_Areas_-_2023-2024)

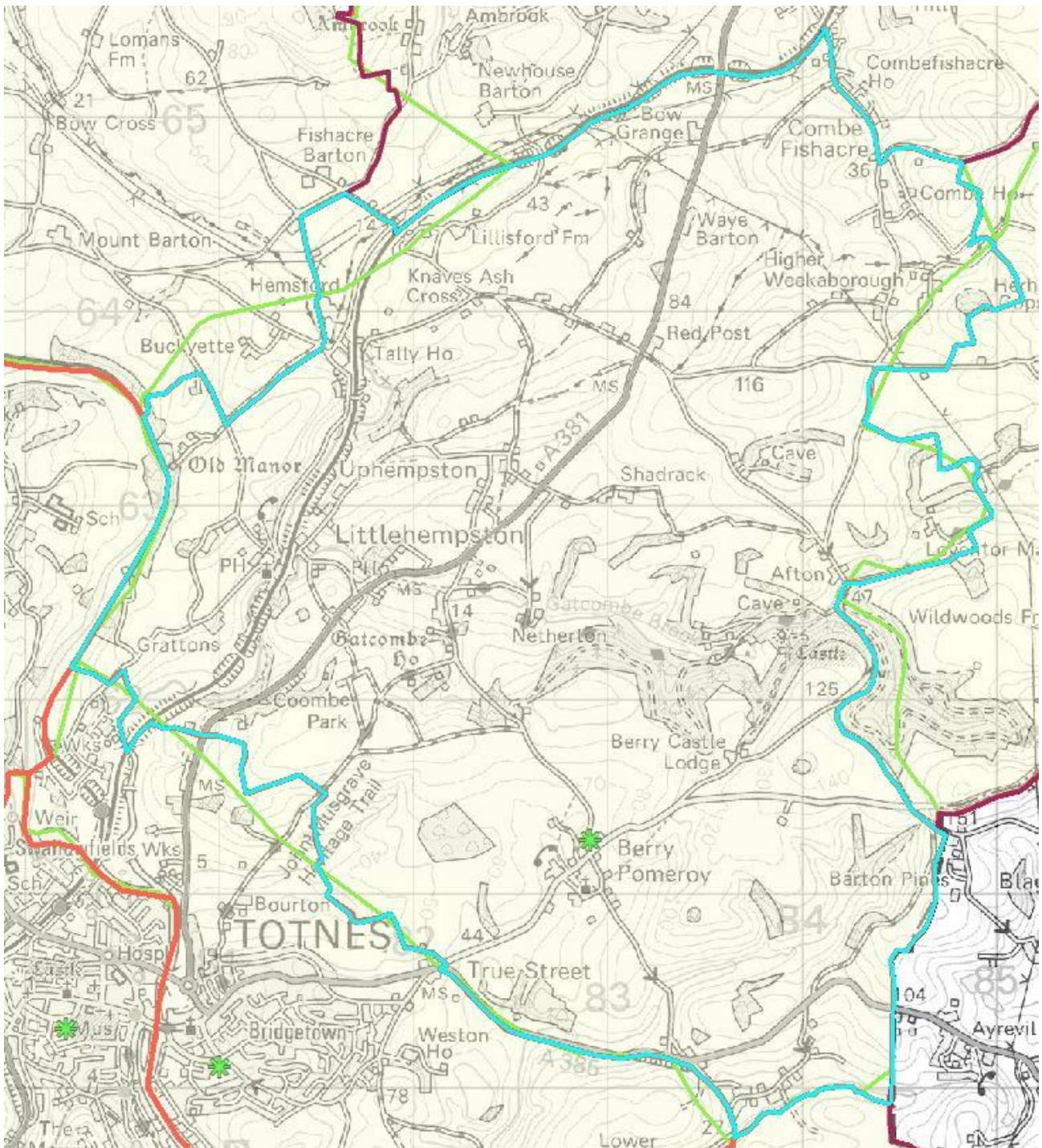
Abbotskerswell Primary School



Agenda Item 8

Appendix Two – Recommended catchment area amendments for Community and Voluntary Controlled schools

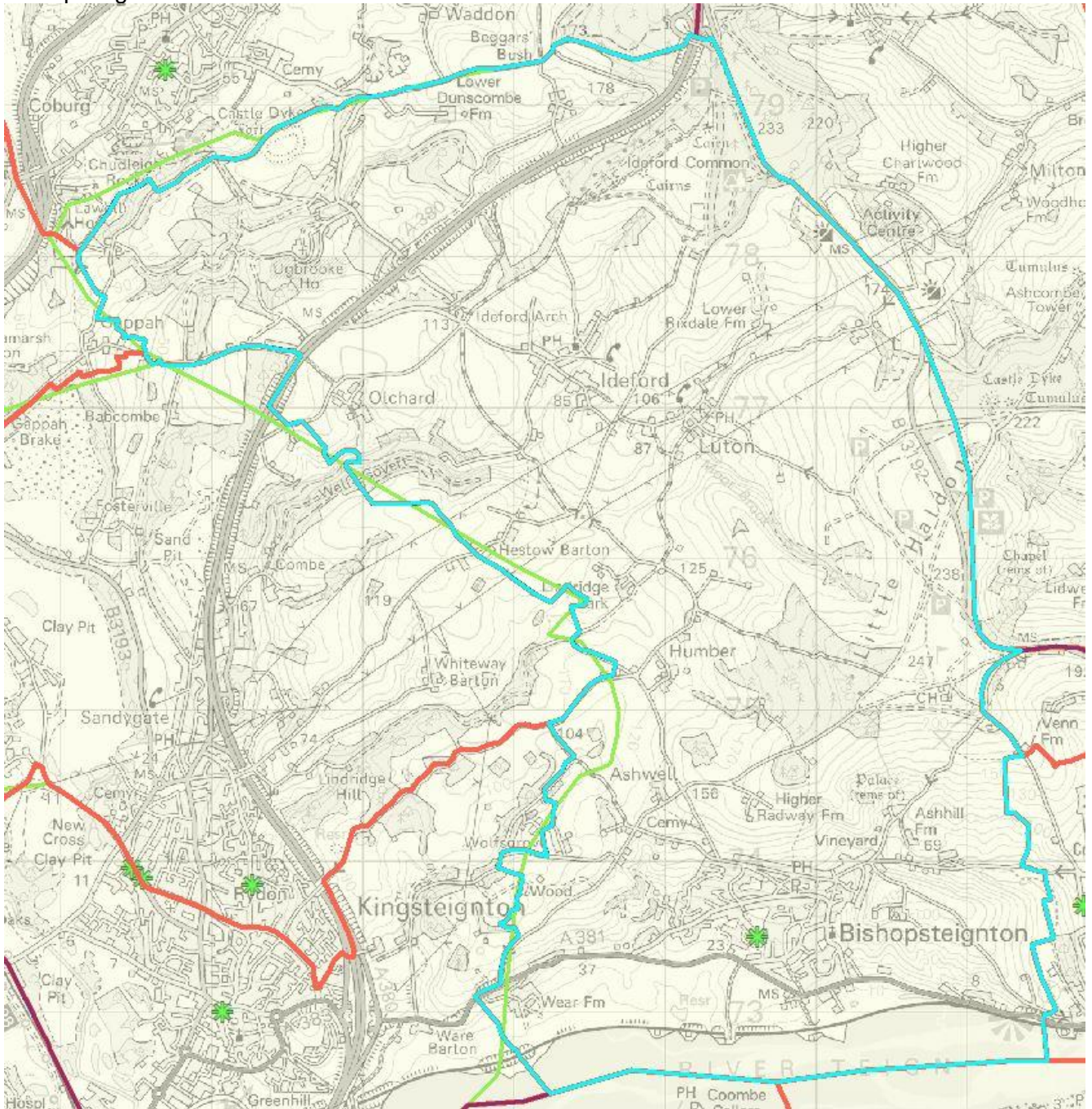
Berry Pomeroy Parochial Church of England Primary School



Agenda Item 8

Appendix Two – Recommended catchment area amendments for Community and Voluntary Controlled schools

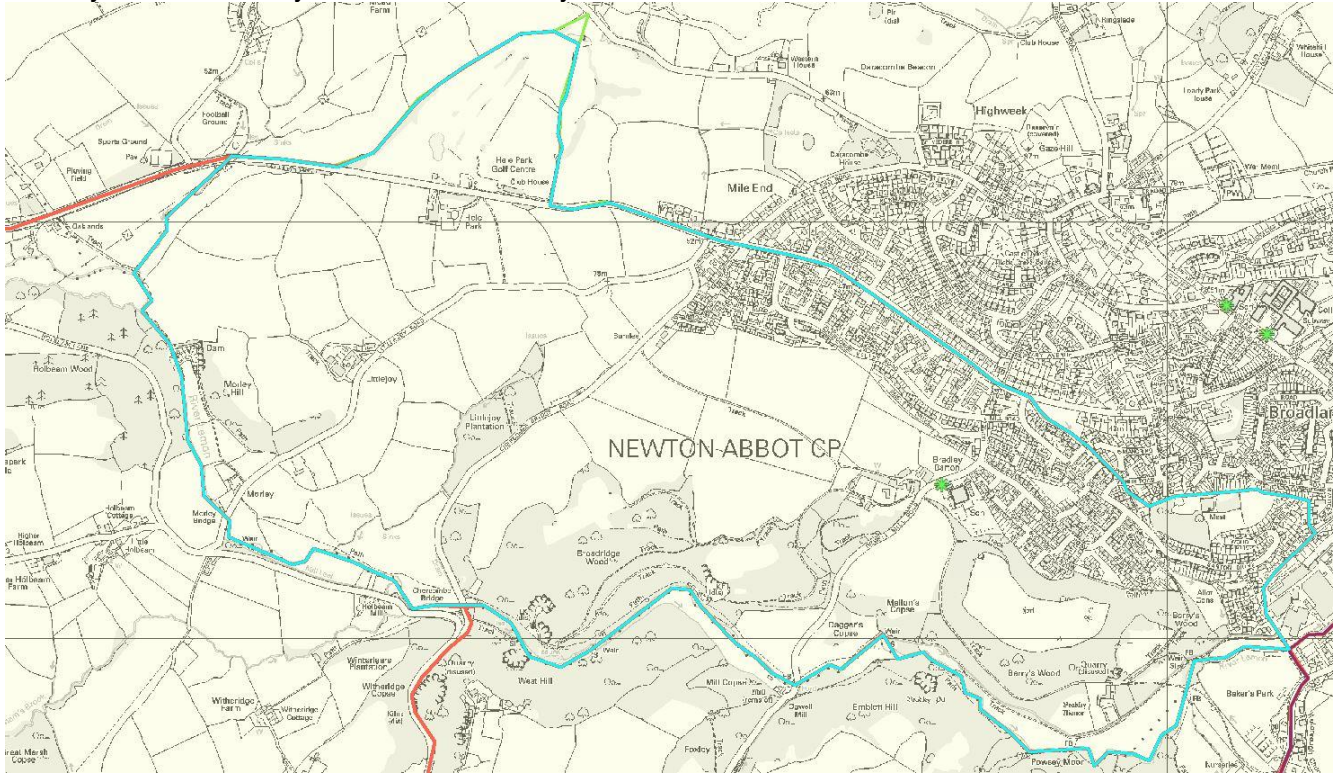
Bishopsteignton School



Agenda Item 8

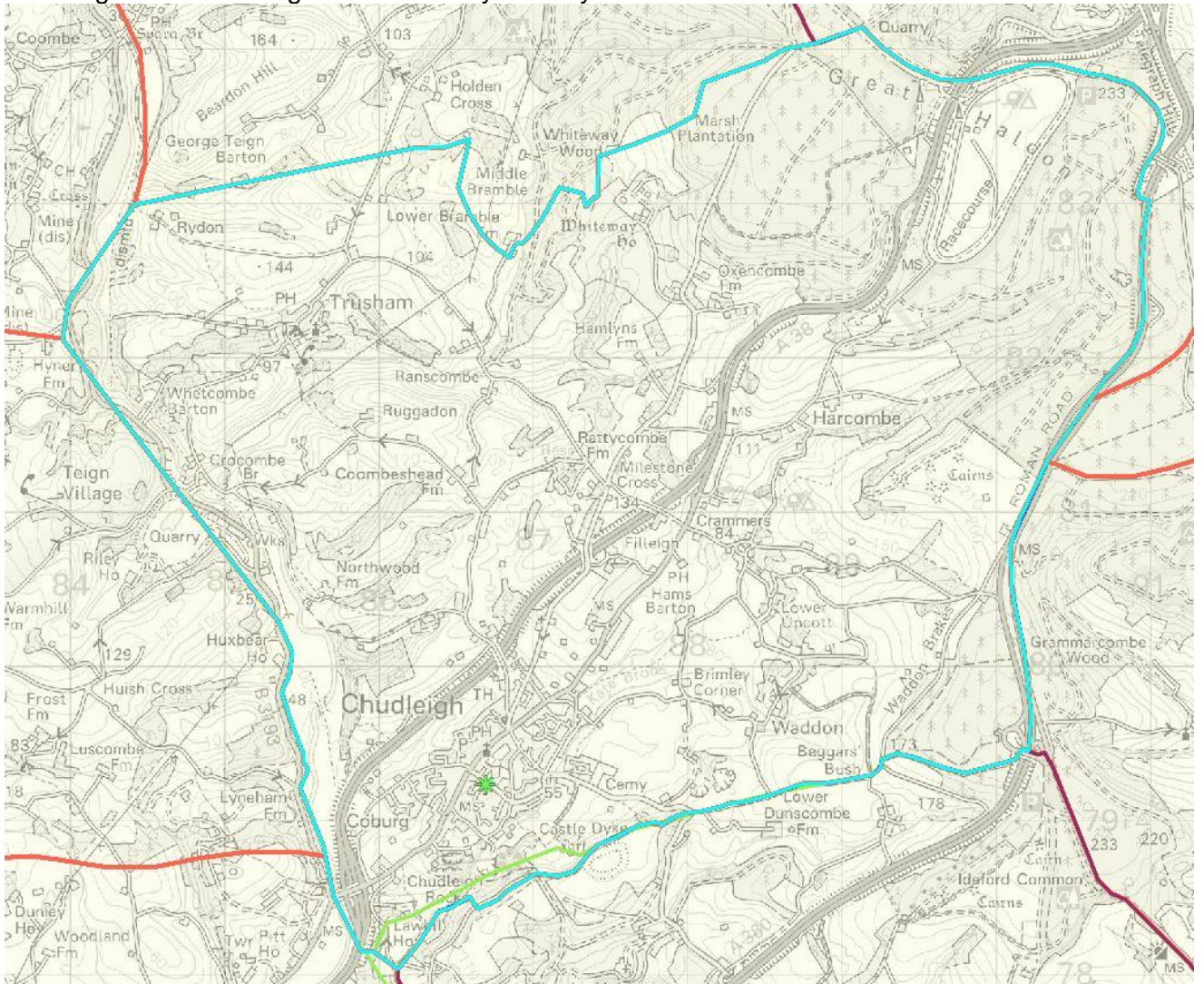
Appendix Two – Recommended catchment area amendments for Community and Voluntary Controlled schools

Bradley Barton Primary School and Nursery Unit



Appendix Two – Recommended catchment area amendments for Community and Voluntary Controlled schools

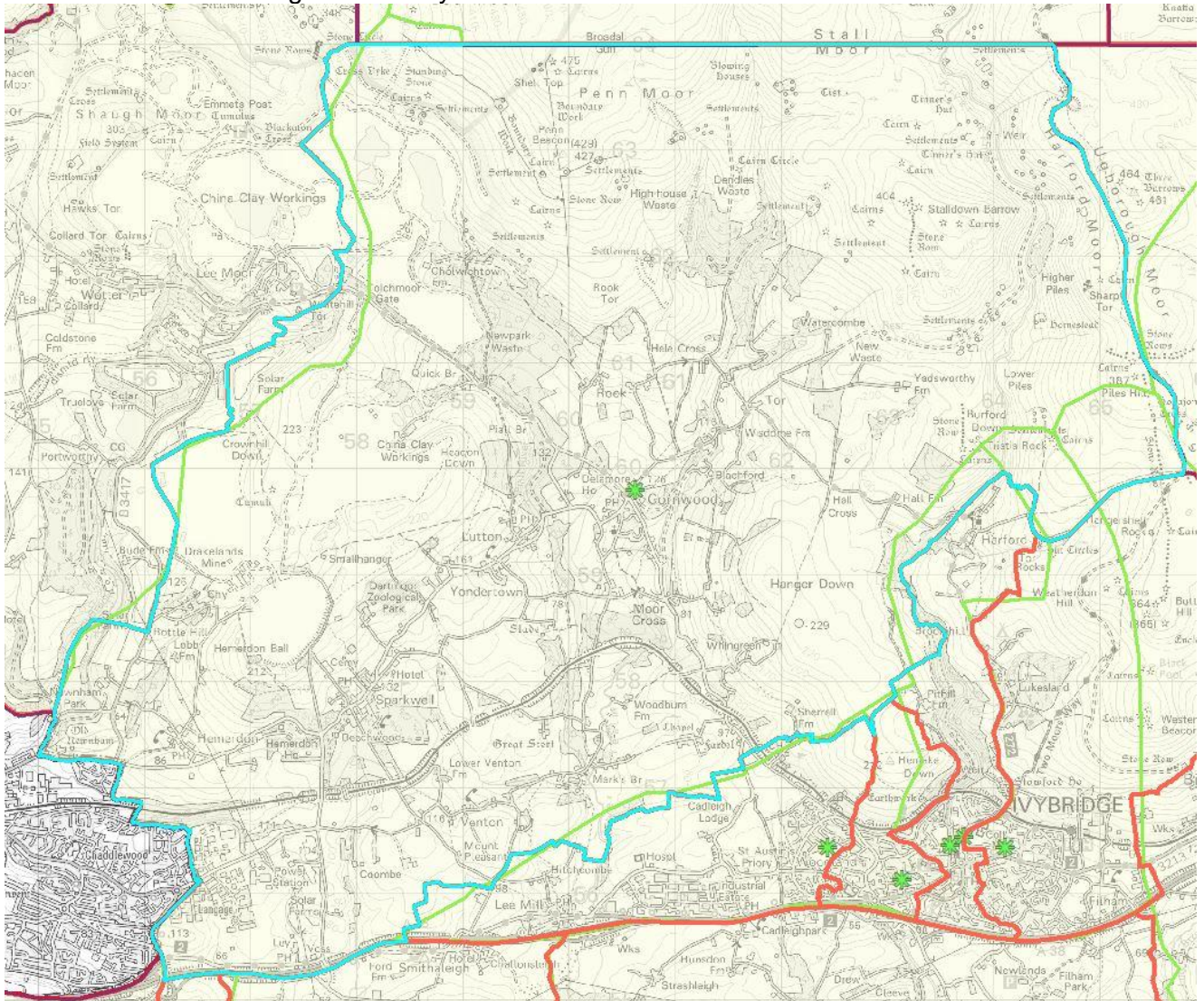
Chudleigh Church of England Community Primary School



Agenda Item 8

Appendix Two – Recommended catchment area amendments for Community and Voluntary Controlled schools

Cornwood Church of England Primary School



Appendix Two – Recommended catchment area amendments for Community and Voluntary Controlled schools

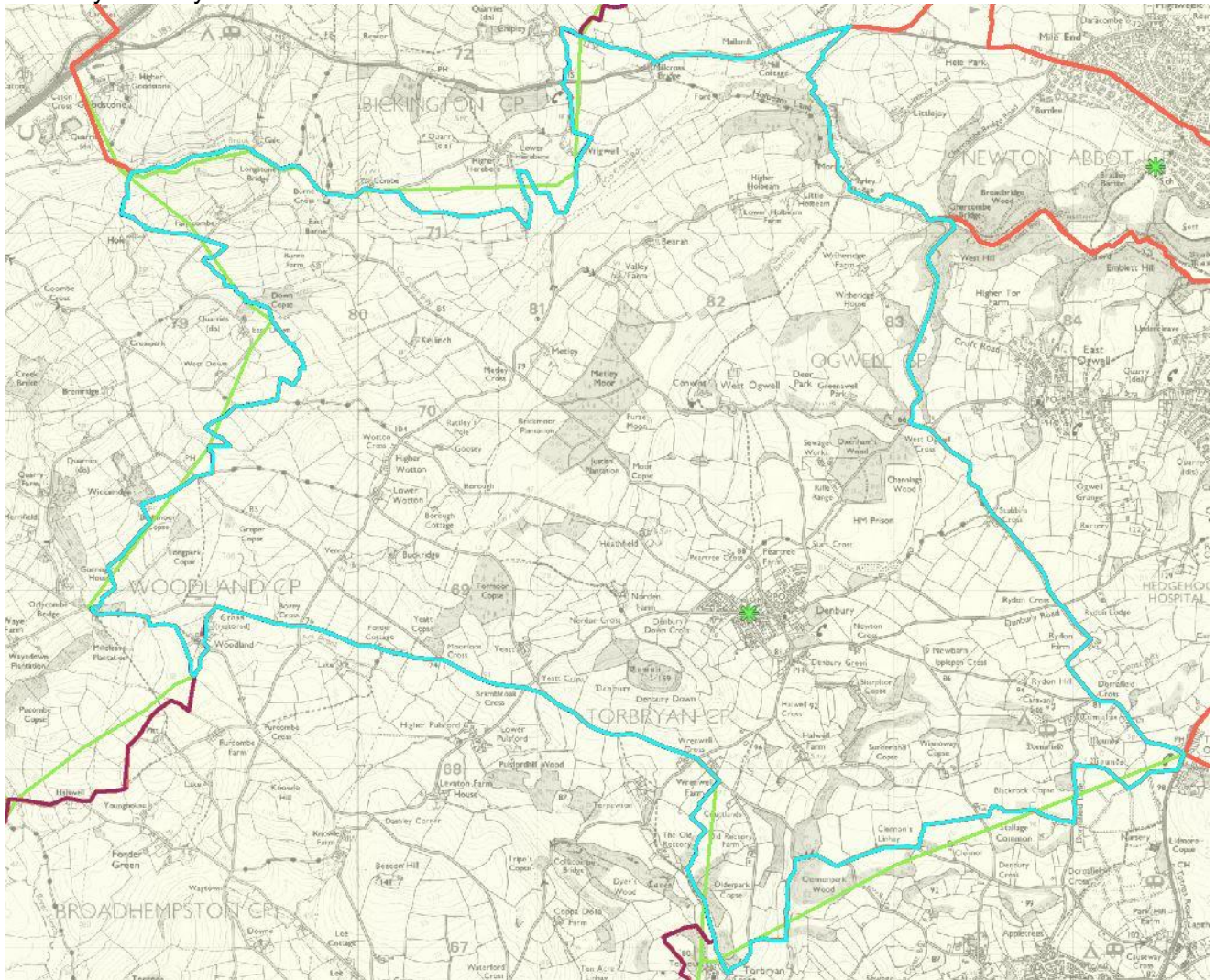
Decoy Primary School



Agenda Item 8

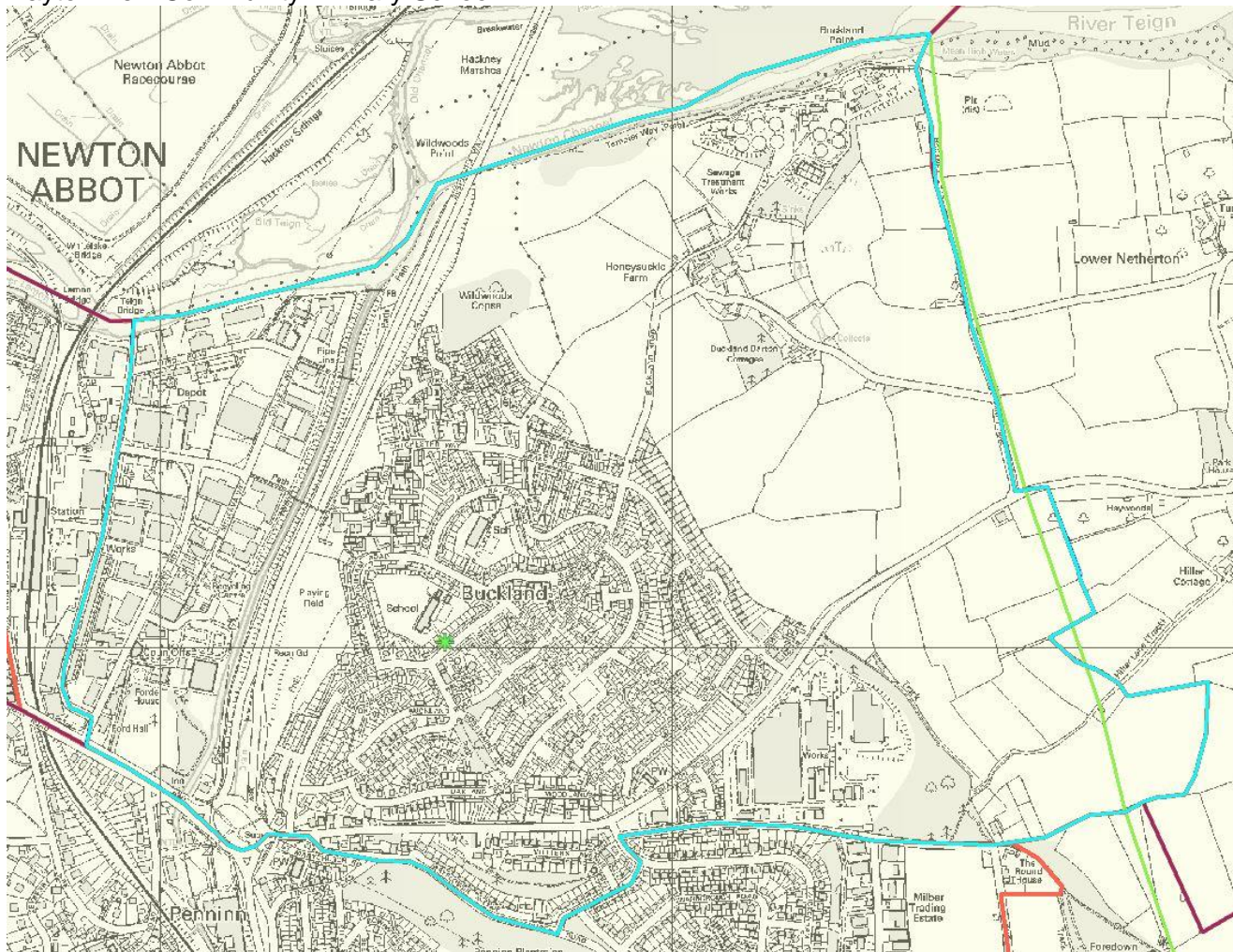
Appendix Two – Recommended catchment area amendments for Community and Voluntary Controlled schools

Denbury Primary School



Appendix Two – Recommended catchment area amendments for Community and Voluntary Controlled schools

Haytor View Community Primary School



Agenda Item 8

Appendix Two – Recommended catchment area amendments for Community and Voluntary Controlled schools

Highweek Community Primary and Nursery School



Appendix Two – Recommended catchment area amendments for Community and Voluntary Controlled schools

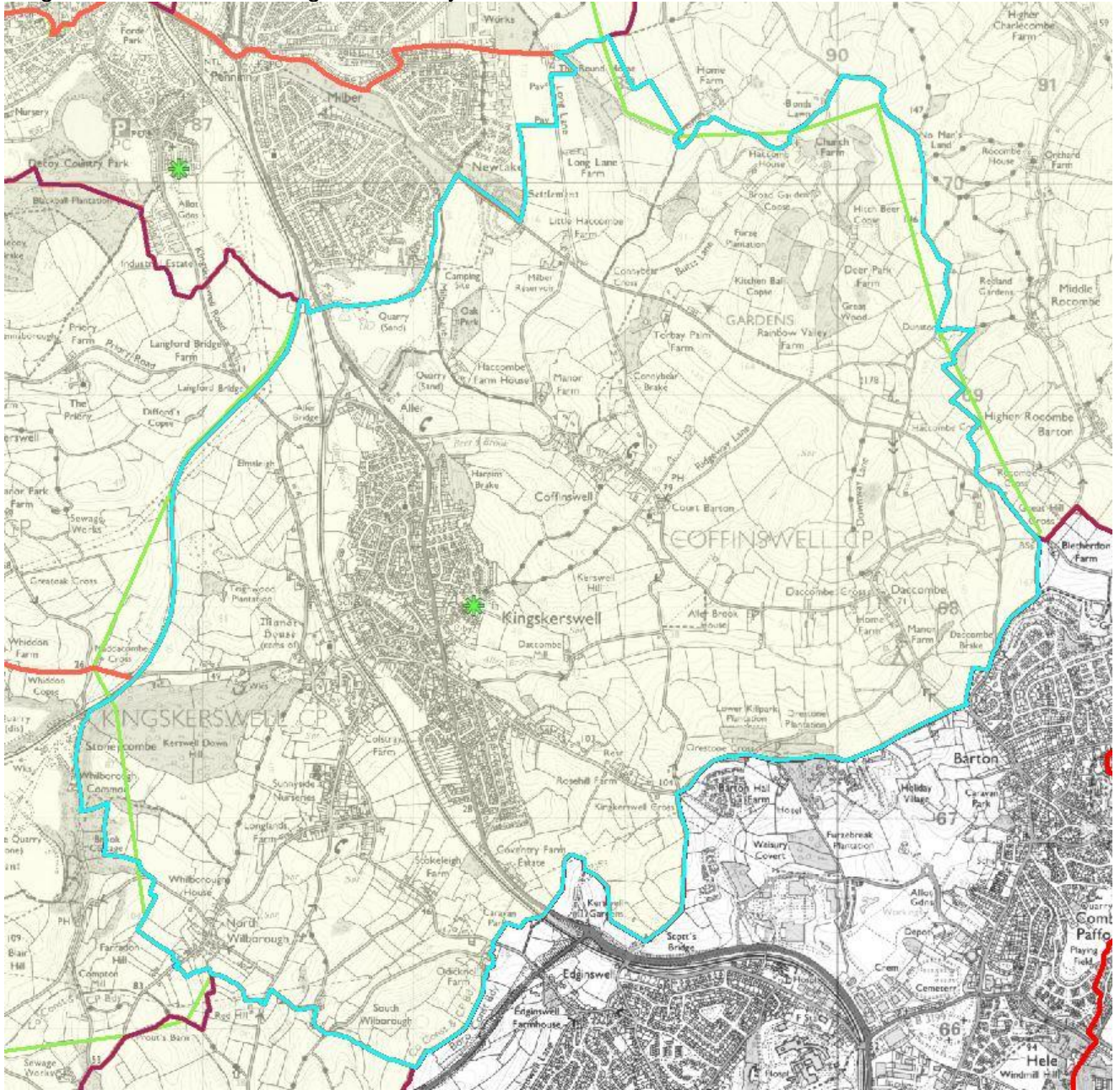
Kingsbridge Community Primary School



Agenda Item 8

Appendix Two – Recommended catchment area amendments for Community and Voluntary Controlled schools

Kingskerswell Church of England Primary School

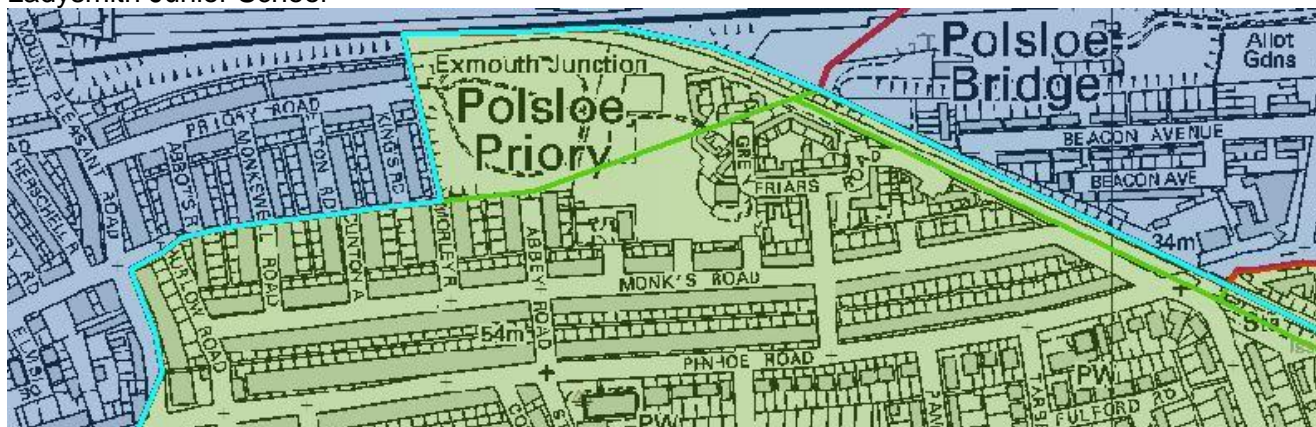


Agenda Item 8

Appendix Two – Recommended catchment area amendments for Community and Voluntary Controlled schools

Ladysmith Infant and Nursery School

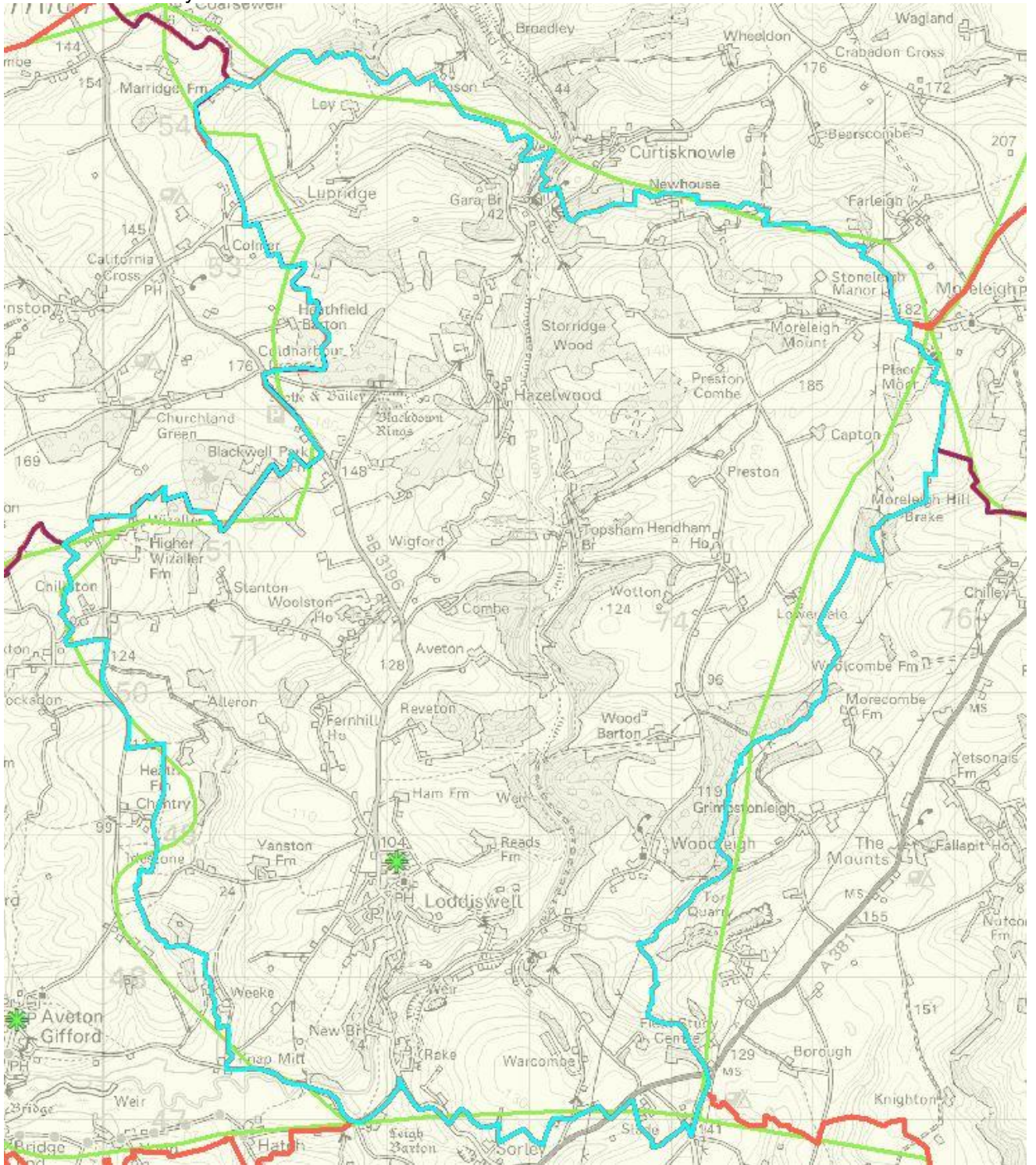
Ladysmith Junior School



Agenda Item 8

Appendix Two – Recommended catchment area amendments for Community and Voluntary Controlled schools

Loddiswell Primary School



Appendix Two – Recommended catchment area amendments for Community and Voluntary Controlled schools

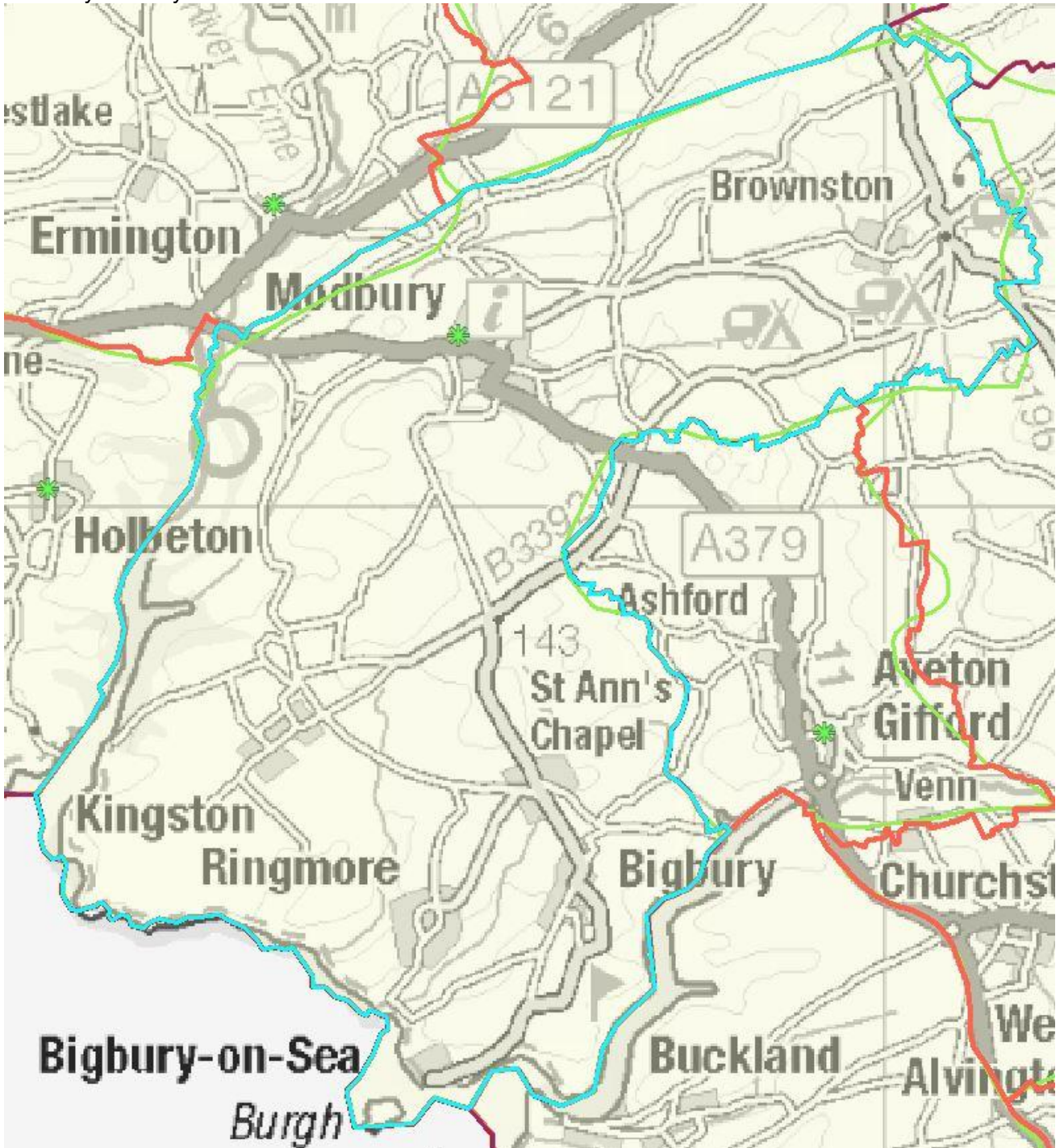
Malborough with South Huish Church of England Primary School



Agenda Item 8

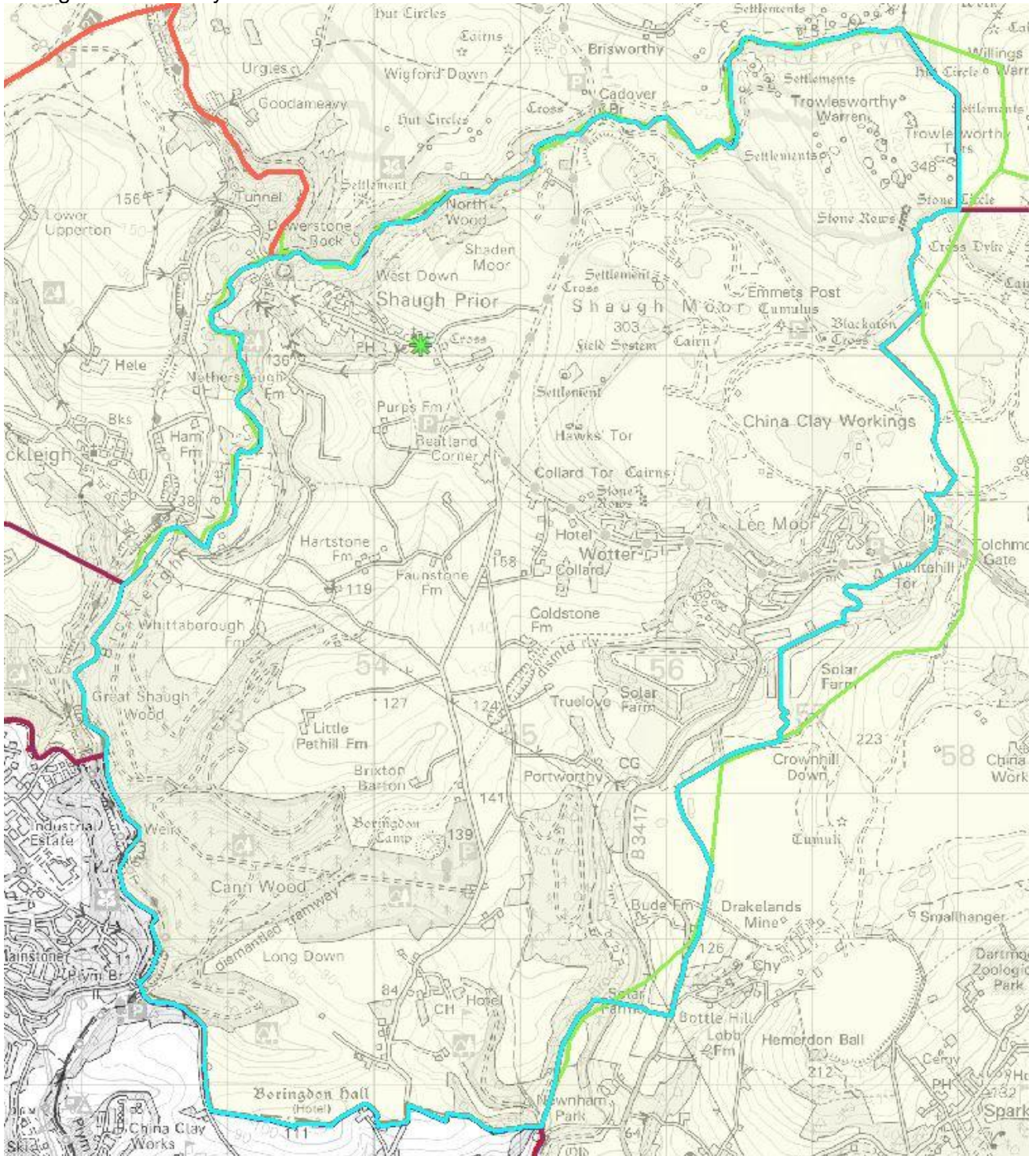
Appendix Two – Recommended catchment area amendments for Community and Voluntary Controlled schools

Modbury Primary School



Appendix Two – Recommended catchment area amendments for Community and Voluntary Controlled schools

Shaugh Prior Primary School



Agenda Item 8

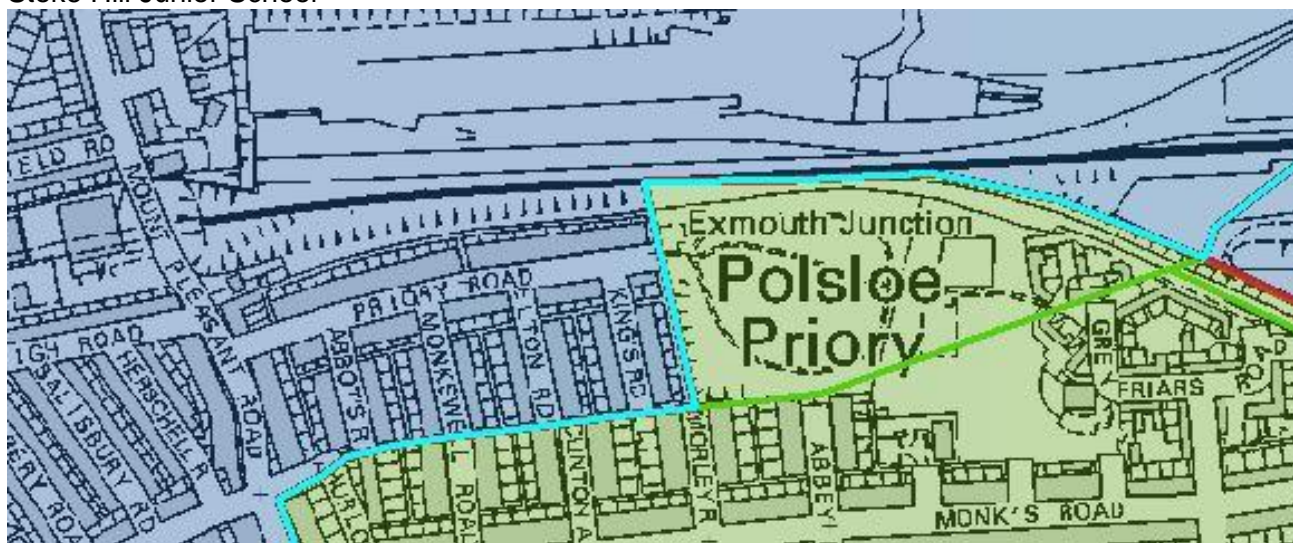
Appendix Two – Recommended catchment area amendments for Community and Voluntary Controlled schools

St Michael's Church of England Primary School, Kingsteignton



Appendix Two – Recommended catchment area amendments for Community and Voluntary Controlled schools

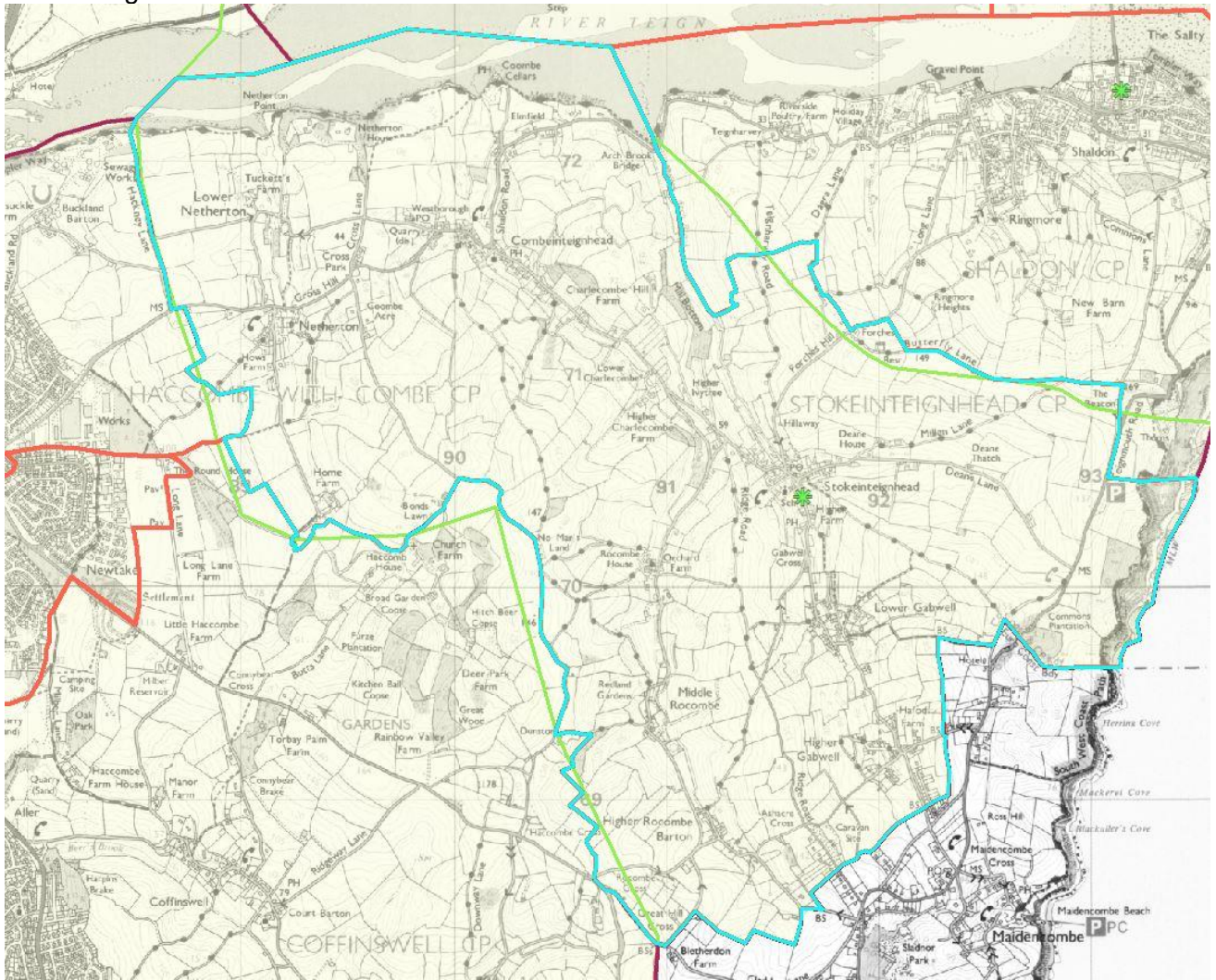
Stoke Hill Infant and Nursery School
Stoke Hill Junior School



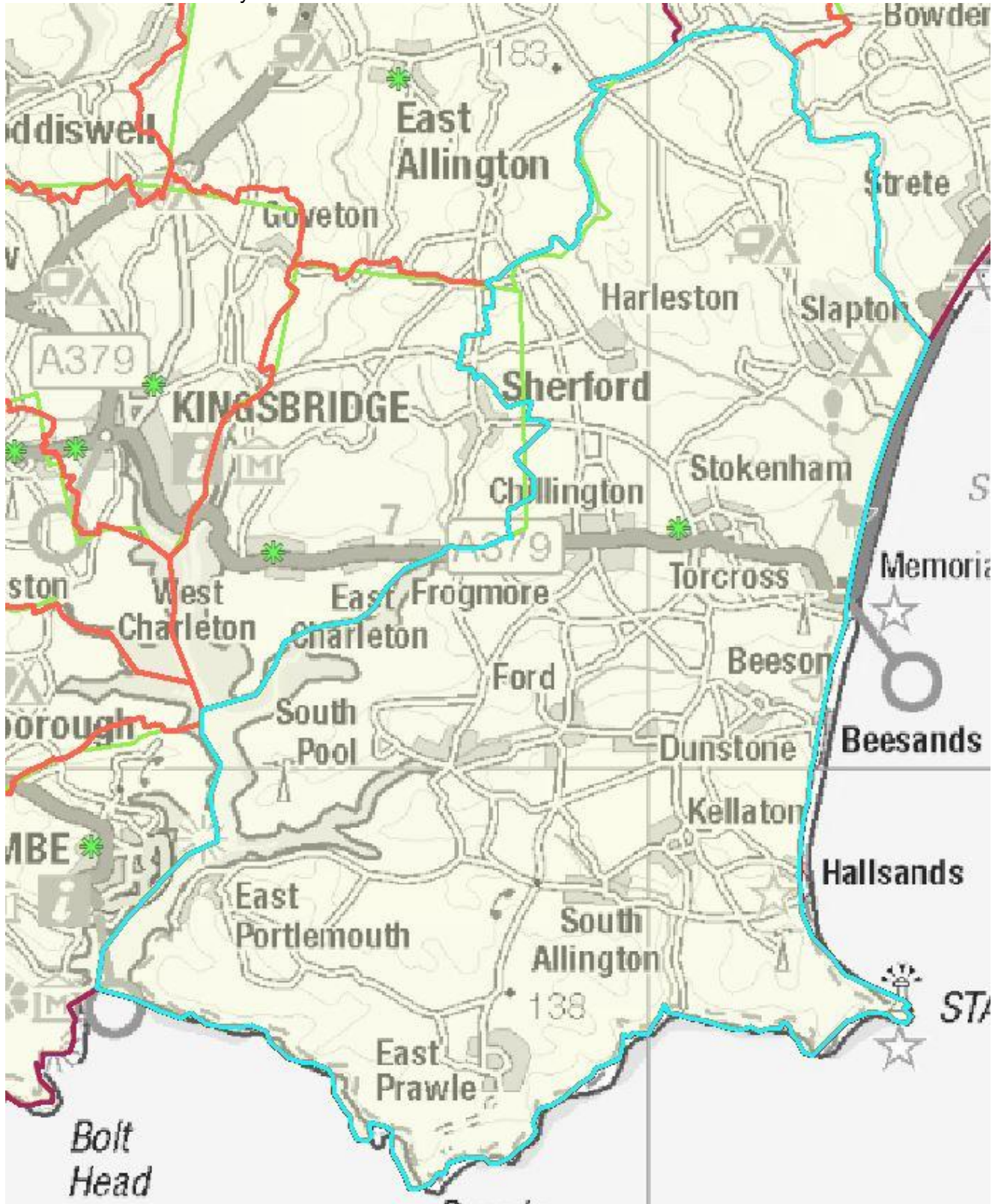
Agenda Item 8

Appendix Two – Recommended catchment area amendments for Community and Voluntary Controlled schools

Stokeinteighhead School



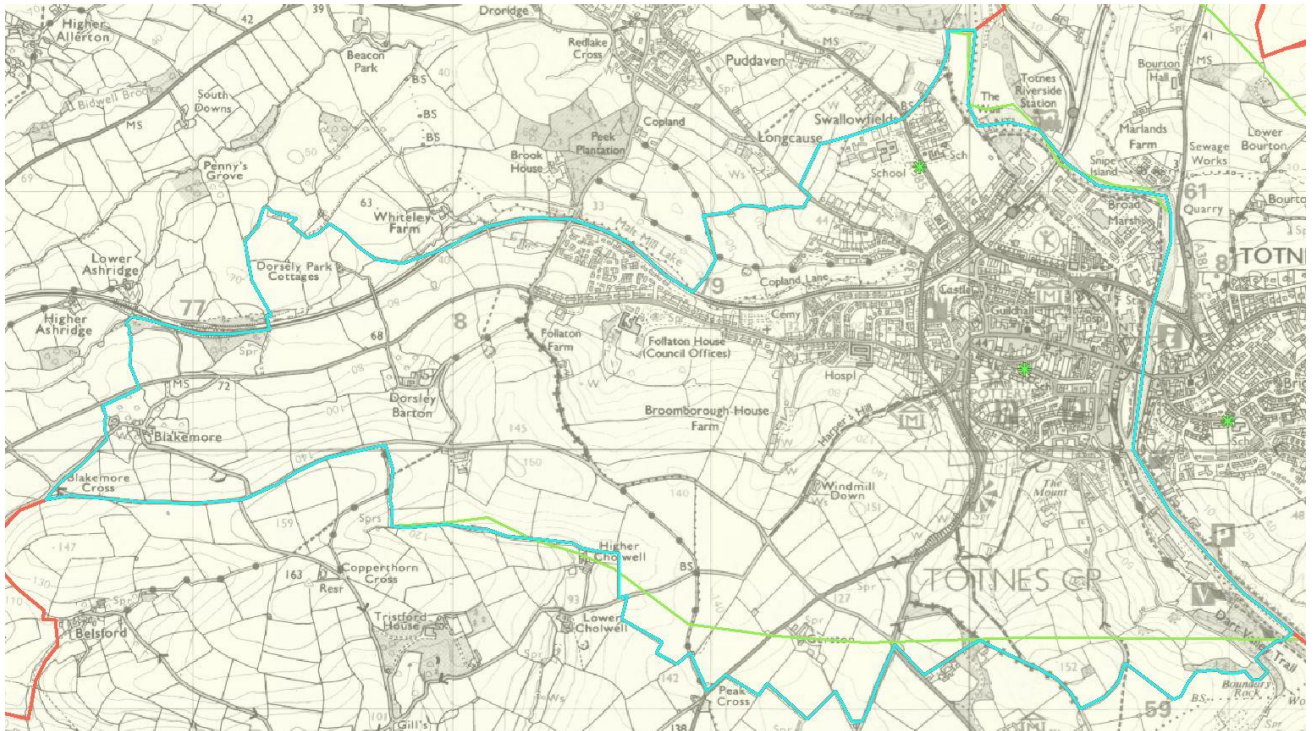
Stokenham Area Primary School



Agenda Item 8

Appendix Two – Recommended catchment area amendments for Community and Voluntary Controlled schools

The Grove Primary School



Appendix Three – Impact of proposed catchment area map amendments

Properties at the following postcodes³ were identified as moving from one catchment area to another under the proposed amendments:

Postcode	from	To	Students' education records
TQ7 4NJ	Aveton Gifford	Modbury	nil
TQ7 4NN	Aveton Gifford	Modbury	nil
TQ7 4EN	Aveton Gifford	Loddiswell	Aveton Gifford preschool
TQ7 4EH	Aveton Gifford	Loddiswell	nil
PL21 0SE	Aveton Gifford	Loddiswell	nil
TQ9 6NJ	Berry Pomeroy	Marldon	Berry Pomeroy & Dartmouth Berry Pomeroy & Dartmouth
TQ9 6NJ	Berry Pomeroy	Marldon	nil
TQ9 6NJ	Berry Pomeroy	Marldon	nil
TQ9 6NJ	Berry Pomeroy	Marldon	nil
TQ3 1SQ	Berry Pomeroy	Marldon	nil
TQ9 6ND	Berry Pomeroy	Broadhempston	none
TQ9 6ND	Berry Pomeroy	Broadhempston	nil
TQ9 6ND	Berry Pomeroy	Broadhempston	nil
TQ9 6ND	Berry Pomeroy	Broadhempston	nil
TQ9 6ND	Berry Pomeroy	Broadhempston	nil
TQ9 6ND	Berry Pomeroy	Broadhempston	nil
TQ9 6ND	Berry Pomeroy	Broadhempston	nil
TQ9 6ND	Berry Pomeroy	Broadhempston	nil
TQ9 6LE	Berry Pomeroy	Totnes St John	nil
TQ9 6LE	Berry Pomeroy	Totnes St John	nil
TQ9 6NE	Broadhempston	Berry Pomeroy	nil
TQ9 6NF	Broadhempston	Ippepen	Berry Pomeroy & Dartmouth Landscope
TQ13 7LZ	Broadhempston	Landscope	Ivybridge Landscope & Broadhempston
TQ13 7LZ	Broadhempston	Landscope	Broadhempston pre-school & Landscope
TQ13 7LZ	Broadhempston	Landscope	Dartington
TQ9 6PD	Broadhempston	Landscope	nil
TQ9 6PD	Broadhempston	Landscope	Landscope
TQ9 6PD	Broadhempston	Landscope	nil
TQ7 2JD	Charleton	Stokenham	Stokenham Stokenham Stokenham
TQ7 2BE	Charleton	Stokenham	nil
TQ7 2BE	Charleton	Stokenham	Stokenham
TQ7 2BE	Charleton	Stokenham	nil
TQ13 0HN	Chudleigh Knighton	Rydon	nil
TQ13 0HN	Chudleigh Knighton	Rydon	nil
TQ10 9JX	Dartington	South Brent	Landscope Ugborough Ugborough pre-school Ugborough
TQ6 0HN	Dartmouth	Blackawton	nil
TQ6 0LE	Dartmouth	Stoke Fleming	nil
TQ6 0LE	Dartmouth	Stoke Fleming	Stoke Fleming pre-school

³ Property names or numbers have been removed from this view for Data Protection reasons.

Agenda Item 8

Appendix Three – Impact of proposed catchment area map amendments

TQ9 7PD	Diptford	Harbertonford	Diptford & Ivybridge CC
TQ9 7LT	Diptford	South Brent	nil
TQ10 9NG	Diptford	Ugborough	nil
TQ9 7AD	East Allington	Blackawton	East Allington East Allington pre-school
PL21 9NY	Ermington	Modbury	Ermington Salcombe
PL21 9NY	Ermington	Modbury	The Erme Modbury Modbury Ermington Ermington Ermington
PL21 9NY	Ermington	Modbury	Holbeton Holbeton
PL21 9NY	Ermington	Modbury	nil
PL21 9NY	Ermington	Modbury	nil
PL21 9NY	Ermington	Modbury	Holbeton
PL21 0LL	Ermington	Ugborough	nil
PL21 0LL	Ermington	Ugborough	nil
PL21 0LD	Ermington	Ugborough	nil
PL21 0LD	Ermington	Ugborough	Independent Independent
PL21 0LD	Ermington	Ugborough	Independent Independent
PL21 0LD	Ermington	Ugborough	nil
PL21 0LD	Ermington	Ugborough	nil
PL21 0LD	Ermington	Ugborough	nil
TQ9 7LD	Harbertonford	Diptford	Diptford Diptford Diptford Blackawton & Kingsbridge CC Blackawton Blackawton & Kingsbridge CC Blackawton
TQ9 7LB	Harbertonford	Diptford	nil
TQ9 7RY	Harbertonford	the Grove	Harbertonford preschool
TQ9 7HQ	Harbertonford	Blackawton	nil
TQ9 7HQ	Harbertonford	Blackawton	nil
TQ9 7HQ	Harbertonford	Blackawton	nil
TQ9 7HQ	Harbertonford	Blackawton	nil
TQ9 7HQ	Harbertonford	Blackawton	nil
TQ9 7HQ	Harbertonford	Blackawton	nil
TQ9 7HQ	Harbertonford	Blackawton	nil
TQ9 7HQ	Harbertonford	Blackawton	nil
TQ9 7HQ	Harbertonford	Blackawton	nil
TQ9 7HQ	Harbertonford	Blackawton	nil
TQ9 7HQ	Harbertonford	Blackawton	Blackawton preschool Blackawton preschool
TQ9 7HQ	Harbertonford	Blackawton	Blackawton & Kingsbridge CC Blackawton
TQ9 7DW	Harbertonford	Blackawton	nil

Agenda Item 8

Appendix Three – Impact of proposed catchment area map amendments

TQ12 5UW	Ipplepen	Broadhempston	nil
TQ7 4AJ	Kingsbridge	Aveton Gifford	nil
TQ7 4AJ	Kingsbridge	Aveton Gifford	nil
TQ7 4AJ	Kingsbridge	Aveton Gifford	nil
TQ12 5LF	Kingskerswell	Abbotskerswell	Teignmouth CS Teignmouth CS
TQ9 6AR	Landscope	Landscope	nil
TQ13 7ND	Landscope	Ashburton	Landscope & South Dartmoor
PL21 0SF	Loddiswell	Modbury	nil
PL21 0HP	Loddiswell	Diptford	nil
PL21 0HP	Loddiswell	Diptford	Modbury & Ivybridge
TQ7 4AH	Loddiswell	Aveton Gifford	nil
TQ8 8NQ	Malborough	Salcombe	nil
TQ3 1TB	Marldon	Ipplepen	Ipplepen Ipplepen
TQ3 1TB	Marldon	Ipplepen	nil
PL21 0SU	Modbury	Aveton Gifford	nil
PL21 0SU	Modbury	Aveton Gifford	nil
PL21 0SE	Modbury	Loddiswell	Aveton Gifford & Kingsbridge CC Aveton Gifford & Kingsbridge CC
TQ13 0BY	Rydon	Chudleigh Knighton	nil
TQ14 0HD	Shaldon	Stokeinteignhead	nil
TQ14 0HD	Shaldon	Stokeinteignhead	Shaldon
TQ10 9EZ	South Brent	Diptford	none none
TQ10 9LT	South Brent	Dartington	nil
TQ12 6QN	St Catherines	Rydon	nil
PL8 2LB	St Marys, Brixton	Yealmpton	nil
PL8 2LB	St Marys, Brixton	Yealmpton	nil
PL8 2LB	St Marys, Brixton	Yealmpton	nil
PL8 2LB	St Marys, Brixton	Yealmpton	nil
PL8 2LB	St Marys, Brixton	Yealmpton	nil
PL8 2LB	St Marys, Brixton	Yealmpton	nil
PL8 2LB	St Marys, Brixton	Yealmpton	nil
PL8 2LB	St Marys, Brixton	Yealmpton	nil
PL8 2LB	St Marys, Brixton	Yealmpton	nil
PL8 2LB	St Marys, Brixton	Yealmpton	nil
TQ6 0NH	Stoke Fleming	Dartmouth	nil
TQ6 0NH	Stoke Fleming	Dartmouth	nil
TQ6 0NH	Stoke Fleming	Dartmouth	nil
TQ6 0NH	Stoke Fleming	Dartmouth	nil
TQ6 0NH	Stoke Fleming	Dartmouth	nil
TQ6 0NH	Stoke Fleming	Dartmouth	nil
TQ6 0NH	Stoke Fleming	Dartmouth	nil
TQ6 0NH	Stoke Fleming	Dartmouth	nil
TQ6 0NH	Stoke Fleming	Dartmouth	nil
TQ6 0LD	Stoke Fleming	Dartmouth	Blackawton Stoke Fleming
TQ9 6PP	Stoke Gabriel	Totnes St John	EHE
TQ12 4EU	Stokeinteignhead	Kingskerswell	nil
PL21 0DP	Stowford	Ugborough	none Woodlands Park Woodlands Park
PL21 0JH	The Erme	Cornwood	nil

Agenda Item 8

Appendix Three – Impact of proposed catchment area map amendments

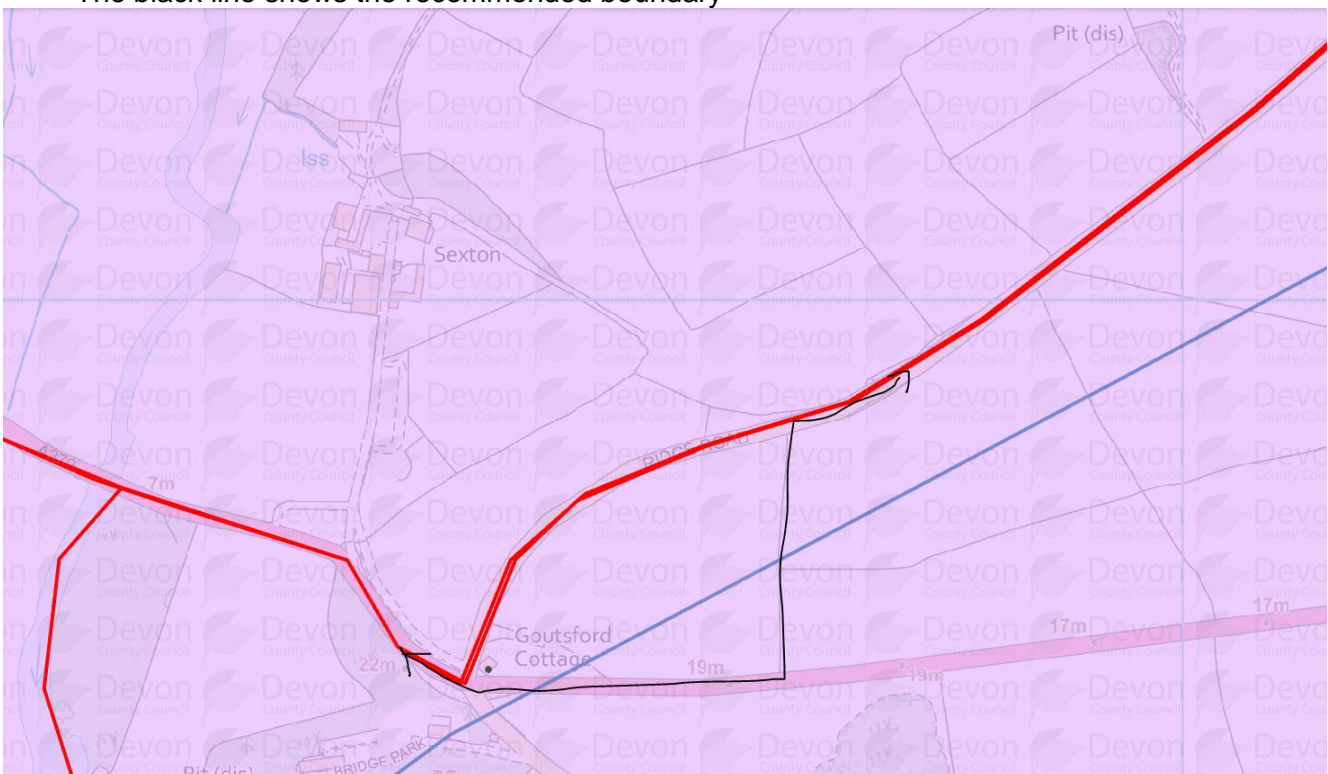
TQ9 7RZ	The Grove	Harbertonford	nil
TQ7 3EE	Thurlestone	Malborough	nil
PL21 0LL	Ugborough	Ermington	Ermington Ermington
PL21 0LL	Ugborough	Ermington	Ermington Stowford Stowford
PL21 0LL	Ugborough	Ermington	nil
PL21 0LL	Ugborough	Ermington	nil
PL21 0LL	Ugborough	Ermington	nil
PL21 0LL	Ugborough	Ermington	nil
PL21 0LL	Ugborough	Ermington	nil
PL21 0LL	Ugborough	Ermington	Ermington
PL9 0DF	Wembury	St Marys, Brixton	nil
	Wembury	St Marys, Brixton	nil
TQ7 3ES	West Alvington	Malborough	nil
PL21 9LB	Yealmpton	Ermington	nil
PL21 9LB	Yealmpton	Ermington	nil
PL21 9LB	Yealmpton	Ermington	Holbeton Holbeton

1. Education records were reviewed to identify where any children have attended school from that property.

2. Three responses were received:

One resident requested that the proposed change of catchment area for Ermington and Modbury be reconsidered. This request has been met in recommending to the that the revised boundary be routed around a field behind the property. Ermington’s catchment is at the top and Modbury at the bottom of the map.

- The blue line shows the current boundary
- The red line shows the proposed boundary
- The black line shows the recommended boundary



Appendix Three – Impact of proposed catchment area map amendments

- One resident queried the impact of the proposed changes for Harbertonford primary on the academic year 2022. There is no impact on the arrangements for 2022-23.
 - Stokenham school queried the extent of the proposed amendments and were satisfied that this was minimal.
3. Where a property moves from one catchment to another, the impact on admissions and transport will be as follows:
- Applications for admission from September 2023 will be subject to the oversubscription priority from being in / out of the new catchment area.
 - Applications for admission from September 2023 for a school that is undersubscribed will be unaffected by any change to the catchment area.
 - Existing transport that is provided on catchment area grounds will continue for the remainder of the child's education at the school from the same address.
 - Applications for transport from September 2023 on catchment area grounds will be subject to the new catchment area.
 - Applications for transport from September 2023 on nearest school grounds or on low-income grounds will be unaffected by any change to the catchment area.
4. A similar exercise is to be undertaken for the remainder of the county for 2024-25.
5. Catchment area maps for the whole of Devon can be viewed at [DCC School Designation Areas - 2023-2024 \(devon.gov.uk\)](#). The 2023-24 proposed maps provide a view of the 2022 and 2023 maps together as above. This allows for close examination of the boundary lines, determined for 2022 and proposed, now recommended for 2023.

Agenda Item 8

Appendix Four – admission arrangements timetable

Timetable for the admissions cycle for 2023-24 and 2024-25

Statutory dates are in bold.

	Action	Action by
15 January 2022	Deadline for timely applications for the normal round of admissions to primary, infant and junior schools.	Admissions service
31 January 2022	Deadline for the completion of the consultation on proposed admission arrangements	Admission Authority
28 February	All policies to be formally determined – including the date of determination in the Policy version section.	Admission Authority
28 February	Appeals timetable to be published	Admissions Service Admissions authority
1 March	National Offer Day for the normal round of admissions to secondary schools.	Admissions Service
15 March	All policies to be published on school websites All faith policies to be forwarded to Diocese All policies to be forwarded to LA Policy Officer.	Admission Authority
16 April	National Offer Day for the normal round of admissions to primary, infant and junior schools.	Admissions Service
By 15 May	Deadline for objections to the OSA	
Summer term 2022	Review content and presentation of policies for 2024-25	Admissions Service
By 1 September	All faith own admission authority schools will receive a suggested new document for consideration	Admissions Service
By 15 September	All other own admission authority schools will receive a suggested new document for consideration	Admissions Service
By 30 September	Faith schools to meet and agree a proposed policy then forward to Diocese (CE confirmed timescale)	Admission Authority
31 October	Deadline for timely applications for the normal round of admissions to secondary schools.	Admissions Service
By 31 October	Diocese to forward proposed policies to LA Policy Officer	CE Diocese Catholic Diocese (if required)
By 31 October	All other own admission authority schools to return proposed policies to LA Policy Officer	Admission authority
1 November	LA-hosted consultation live for proposed admission arrangements for 2022-23	Admissions Service
7 January 2023	LA-hosted consultation ends	Admissions Service
31 January	Deadline for the completion of the consultation on proposed admission arrangements	Admission Authority
28 February	All policies to be formally determined – including the date of determination in the Policy version section.	Admission Authority
28 February	Appeals timetable to be published	Admissions Service

Appendix Four – admission arrangements timetable

		Admissions authority
15 March	All policies to be published on school websites All faith policies to be forwarded to Diocese All policies to be forwarded to LA Policy Officer.	Admission Authority
By 15 May	Deadline for objections to the OSA	

Agenda Item 8

Appendix Five – recommended amendments to the Co-ordinated Admissions Schemes

1. The policy documents can be viewed within the Co-ordinated Admissions Schemes folder at <http://devon.cc/lapolicies>:
 - Proposed 2023-24 Normal Round Admissions Scheme.
 - Proposed 2023-24 In-Year Co-ordinated Admissions Scheme
2. Amendments to wording are highlighted in red text.
3. Dates have been rolled forward for the new academic year.
4. Dates for selective testing for schools and their outcomes will be inserted when the respective policies have been determined.
5. In individual school policies, contact details for the CEAS have been updated.
6. Wording has been updated to emphasise the statutory timescale for in-year applications to be resolved. This is a maximum of 15 school days but with an aim of resolution in 10 school days.

DEVON COUNTY COUNCIL

COUNCIL/CABINET FORWARD PLAN

In line with the public's general rights of access to information and the promotion of transparency in the way which decisions are taken by or on behalf of the Council, Devon County Council produces a Forward Plan of any Key Decisions to be taken by the Cabinet and any Framework Decisions to be made by the County Council. The Plan normally covers a period of a minimum of four months from the date of publication and is updated every month.

The County Council has defined key decisions as those which by reason of their strategic, political or financial significance or which will have a significant effect on communities in more than one division are to be made by the Cabinet or a Committee of the Cabinet. Framework Decisions are those decisions, which, in line with Article 4 of the Council's Constitution must be made by the County Council.

The Cabinet will, at every meeting, review its forthcoming business and determine which items are to be defined as key decisions and the date of the meeting at which every such decision is to be made, indicating what documents will be considered and where, in line with legislation, any item may exceptionally be considered in the absence of the press and public. The revised Plan will be published with the papers for the meeting. *Where possible the Council will attempt to keep to the dates shown in the Plan. It is possible that on occasion may need to be rescheduled.* Please ensure therefore that you refer to the most up to date Plan.

Click to see an [up to date version of the Forward Plan](#) on the Council's web site at any time.

Also see the website for [Copies of Agenda and Reports of the Cabinet or other Committees of the County Council](#) referred to in this Plan

FORWARD PLAN

All items listed in this Forward Plan will be discussed in public at the relevant meeting, unless otherwise indicated for the reasons shown

Any person who wishes to make representations to the Council/Cabinet about (a) any of the matters proposed for consideration in respect of which a decision is to be made or (b) whether or not they are to be discussed in public or private, as outlined below, may do so in writing, before the designated Date for Decision shown, to The Democratic Services & Scrutiny Secretariat, County Hall, Exeter, EX2 4QD or by email to: members.services@devon.gov.uk

PART A - KEY DECISIONS

(To Be made by the Cabinet)

Date of Decision	Matter for Decision	Consultees	Means of Consultation*	Documents to be considered in making decision	County Council Electoral Division(s) affected by matter
<i>Regular / Annual Matters for Consideration</i>					
9 March 2022	Flood Risk Management Action Plan 2022/2023 Update on the current year's programme and approval of schemes and proposed investment in 2022/2023	Liaison through Devon Operation Drainage Group	All other Risk Management Authorities	Report of the Head of Planning, Transportation and Environment outlining all relevant considerations, information and material including any equality and / or impact assessments, as necessary.	All Divisions

11 February 2022	Admission Arrangements and Education Travel Review: Approval to admission arrangements for subsequent academic year	School / Academies /Members	Online	Report of the Head of Education and Learning outlining all relevant considerations, information and material including any equality and / or impact assessments, as necessary.	All Divisions
13 April 2022	Highway Maintenance Capital Budget and On Street Parking Account: Progress on the 2021/2022 Capital Programme and Proposals for the 2022/2023 Programmes			Report of the Chief Officer for Highways, Infrastructure Development and Waste outlining all relevant considerations, information and material including any equality and / or impact assessments, as necessary.	All Divisions
13 July 2022	Revenue and Capital Outturn 2021/2022	N/A	N/A	Report of the Director of Finance outlining all relevant considerations, information and material including any equality and / or impact assessments, as necessary.	All Divisions
14 September 2022	Adult Social Care - Sufficiency Assessment - Annual Return			Report of the Locality Director outlining all relevant considerations, information and material including any equality and / or impact assessments, as necessary.	All Divisions
14 December 2022	Target Budget and Service Targets for 2023/2024			Report of the Director of Finance outlining all relevant considerations, information and material including any equality and / or impact assessments, as necessary.	All Divisions
	<i>Specific Matters for Consideration</i>				

9 March 2022	Budget Monitoring - Month 10	N/A	N/A	Report of the Director of Finance outlining all relevant considerations, information and material including any equality and / or impact assessments, as necessary.	All Divisions
9 March 2022	Stover Park - Approval of funding bid to the National Lottery Heritage Fund for Restoring the Park	Restoring Stover Advisory Board	Quarterly progress updates throughout development phase	Report of the Chief Officer for Highways, Infrastructure Development and Waste outlining all relevant considerations, information and material including any equality and / or impact assessments, as necessary.	Bovey Rural
9 March 2022	Approval of design for improvement to Cedars Junction, Barnstaple	Local Member and adjacent members. Cedars Inn. General public	Online, local news companies, and direct email to specific consultees	Report of the Head of Planning, Transportation and Environment outlining all relevant considerations, information and material including any equality and / or impact assessments, as necessary.	Fremington Rural
9 March 2022	Plymouth and South Devon Freezone	Land owners, Plymouth and South Devon Freezone Stakeholder Group	Meetings and an Event	Report of the Head of Planning, Transportation and Environment, Head of Economy, Enterprise and Skills, Director of Finance outlining all relevant considerations, information and material including any equality and / or impact assessments, as necessary.	Bickleigh & Wembury

<p>9 March 2022</p>	<p>Managing Big Problems in Small Places in Rapid Response type Catchments: Approval to submit Outline Business Case to deliver a Flood Resilience Partnership project across Devon funded by Government's Flood & Coastal Resilience Innovation Programme</p>	<p>Project stakeholders including project partners and contributors: Environment Agency, Devon's Unitary and District Councils, National Parks Authorities, North Devon Biosphere, Blackdown Hills AONB, partner environmental non-governmental organisations, South West Water, University of Exeter, University of Plymouth, Cllr Roger Croad</p>	<p>Stakeholders meetings and partners meetings to inform the project's objectives and activities. Project Expression of Interest (Project Application) consultation with stakeholders via meetings and correspondence</p>	<p>Report of the Head of Planning, Transportation and Environment outlining all relevant considerations, information and material including any equality and / or impact assessments, as necessary.</p>	<p>All Divisions</p>
---------------------	--	---	---	---	----------------------

9 March 2022	Bideford Library Project: Approval to award the contract	N/A	N/A	Report of the Head of Communities outlining all relevant considerations, information and material including any equality and / or impact assessments, as necessary.	Bideford East
9 March 2022	Part 2 - Skypark Development Partnership Joint Venture – Update to Proposals	N/A	N/A	Report of the Head of Economy, Enterprise and Skills outlining all relevant considerations, information and material including any equality and / or impact assessments, as necessary.	Broadclyst
13 April 2022 Page 64	Devon County Council's submission to the Devon Climate Emergency partnership's consultation about its response to the Devon Climate Assembly's recommendations	All members	Standing Overview Group – Corporate, Infrastructure and Regulatory Services Committee	Report of the Head of Planning, Transportation and Environment outlining all relevant considerations, information and material including any equality and / or impact assessments, as necessary.	All Divisions
13 April 2022	Approval of revisions to the Highway Infrastructure Asset Management Strategy	Corporate, Infrastructure and Regulatory Services Scrutiny Committee	Meeting	Report of the Chief Officer for Highways, Infrastructure Development and Waste outlining all relevant considerations, information and material including any equality and / or impact assessments, as necessary.	All Divisions

13 April 2022	Anti-Racism Framework			Report of the Head of Communities outlining all relevant considerations, information and material including any equality and / or impact assessments, as necessary.	All Divisions
14 September 2022	Budget Monitoring - Month 4	N/A	N/A	Report of the Director of Finance outlining all relevant considerations, information and material including any equality and / or impact assessments, as necessary.	All Divisions
9 November 2022	Budget Monitoring - Month 6	N/A	N/A	Report of the Director of Finance outlining all relevant considerations, information and material including any equality and / or impact assessments, as necessary.	All Divisions
9 November 2022	Childcare Sufficiency Assessment - Annual Return			Report of the Head of Education and Learning outlining all relevant considerations, information and material including any equality and / or impact assessments, as necessary.	All Divisions

PART B -FRAMEWORK DECISIONS
(Requiring approval of the County Council)

Date of Decision	Matter for Decision	Consultees	Means of Consultation**	Documents to be considered in making decision	County Council Electoral Division(s) affected by matter
-------------------------	----------------------------	-------------------	--------------------------------	--	--

--	--	--	--	--	--

19 January 2022	Pay Policy Statement 2022/2023	Appointments , Remuneratio n and Chief Officer Conduct Committee	Meetings	Report of the Chief Executive outlining all relevant considerations, information and material including any equality and / or impact assessments, as necessary.	All Divisions
17 February 2022					
11 February 2022	Revenue Budget, Medium Term Financial Strategy 2022/2023 - 2025/2026 and the Capital Programme for 2022/2023 - 2026/2027	Consultation with Trade Unions / Business and those that champion the interests of older people and the voluntary sector. Scrutiny Committees	Meetings	Report of the Director of Finance outlining all relevant considerations, information and material including any equality and / or impact assessments, as necessary.	All Divisions
17 February 2022					

PART C - OTHER MATTERS (i.e. Neither Key Nor Framework Decisions)					
Date of Decision	Matter for Decision	Consultees	Means of Consultation**	Documents to be considered in making decision	County Council Electoral Division(s) affected by matter

--	--	--	--	--	--

Regular / Annual Matters for Consideration					
Between 11 February 2022 and 8 May 2025	Standing Items, as necessary (Minutes, References from Committees, Notices of Motion and Registers of Delegated or Urgent Decisions)	As necessary		Report of the TBC outlining all relevant considerations, information and material including any equality and / or impact assessments, as necessary.	All Divisions
Between 11 February 2022 and 8 May 2025 and Between 11 February 2022 and 8 May 2025	Standing Items, as necessary (Minutes, References from Committees, Notices of Motion and Registers of Delegated or Urgent Decisions) <i>[NB: Items relating to the letting or occupancy of individual holdings may contain information about, or which is likely to reveal the identity of, an applicant for a holding and about the financial and business affairs of the Council and any prospective or existing tenant that may need to be discussed in the absence of the press and public]</i>	To be considered at the Farms Estates Committee, including any advice of the Council's Agents NPS South West Ltd		Report of the Head of Digital Transformation and Business Support, Director of Finance outlining all relevant considerations, information and material including any equality and / or impact assessments, as necessary.	All Divisions
13 July 2022	Treasury Management Stewardship Outturn Report	Corporate Infrastructure and Regulatory Services Scrutiny Committee		Report of the Director of Finance outlining all relevant considerations, information and material including any equality and / or impact assessments, as necessary.	All Divisions

13 July 2022	Public Health Annual Report 2021/2022			Report of the Director of Public Health outlining all relevant considerations, information and material including any equality and / or impact assessments, as necessary.	All Divisions
9 November 2022	Torbay and Devon Safeguarding Adults Partnership - Annual Report			Report of the Chair of Board outlining all relevant considerations, information and material including any equality and / or impact assessments, as necessary.	All Divisions
14 December 2022	Treasury Management Stewardship Mid Year Report	CIRS Scrutiny Committee	Committee	Report of the Director of Finance outlining all relevant considerations, information and material including any equality and / or impact assessments, as necessary.	All Divisions
	<i>Specific Matters for Consideration</i>				